

# OUMAN

## BUILDING AUTOMATION PRICE LIST

# 2026

**OUMAN**

New air handling unit controller - S105

Read more

The most popular products

- OUMAN A203 Heating controller for three circuits, DIN rail mounting 1485,00 €
- OUMAN M1415 Valve actuator, VDC controlled 306,00 €

The latest products



Have you already used?  
<https://oumanshop.com>



# Table of contents

---

## Unit prices

Heating and air handling unit controllers .....	3
GSM modems.....	5
Casing packages .....	6
Freely programmable automation units .....	7
I/O Extension units.....	8
Building automation system topology .....	9
Ouman Ounet.....	11
FT-Screen touch screen panels .....	11
M-LINK interface converter .....	12
Ouman 4G-internet product.....	12
Channel adapter cards .....	13
Casing solutions .....	13
Temperature sensors and room units .....	14
Ouman wireless sensor system .....	16
Energy meter and transmitters .....	17
2-way valves .....	19
3-way valves .....	24
Connection sets .....	28
Valve adapters .....	29
Valve dimensioning table.....	30
Valves actuators, 3-point control .....	31
Valve actuators, 0-10 V control .....	33
Damper actuators .....	35
Other field devices.....	38
General Terms of Delivery and Warranty .....	40
Contact details .....	42

PRODUCT CATEGORIES:



# Heating and air handling unit controllers

## EH-800 AND EH-800B HEATING CONTROLLER FOR SMALL HOMES

A new heating controller with one heating circuit, which is also possible to expand to have two heating circuits or alternatively to control two heating sources simultaneously. The controller can be used either with a home network or an internet web browser (not EH-800B). It is also possible to connect it to GSM.

With EH-800 it is delivered the heating controller and the actuator as a compact device, supply water sensor (TMS), outdoor temperature sensor with a plug-connection, power supply and the necessary adapter for the most common control valve (e.g. Termomix). It is possible also to order the adapters for Esbe VRG, VRB and Belimo R4-series valves. The controller is easy to install and use. It has 3 years warranty.



<b>EH-800</b> OMA0559	Heating controller	B1	888
<b>EH-800B</b> OMA0558	Heating controller without Internet option	B1	779
<b>SOV-ESBE2</b> OMA0266	Adapter for Esbe VRG and VRB valves	B1	37

## EXP-800 EXPANSION PACKAGE FOR THE EH-800 CONTROLLERS

Another heating circuit / for parallel control of another source of heat

Product package content: Pre-connected expansion unit, connecting cable, Belimo HTC24-SR valve engine, adapter for the most common mixing valve, TMS-3M surface temperature sensor and the introduction of the necessary instructions.



<b>EXP-800</b> OMA0160	Expansion package for the EH-800 controllers	B1	420
---------------------------	--	----	-----

## EXU-800 EXTERNAL UNIT FOR EH-800 AND EH-800B

External unit EXU-800 makes it possible to control a second valve actuator, another relay and also add two measurement information to the EH-800 heating controller.

EXU-800 product packaging containing the encapsulated control card, RJ45 cord and the coupling guide.



<b>EXU-800</b> OMA0161	External unit for EH-800 and EH-800B	B1	92
---------------------------	--------------------------------------	----	----

## OPTIONAL EQUIPMENT

<b>TMR</b> OMA0011	Room sensor (NTC10)	A1	50
<b>TMR/SP</b> OMA0310	Room sensor with fine-tuning knob	A1	57
<b>TMS-4M</b> OMA0321	Surface sensor (NTC10), connection cable 4 m	A1	32
<b>C01A</b> OMA0043	Thermostat, surface mounting, 20 ... 90 °C, differential range 7 °C	A2	100
<b>GSMMOD 4G 2</b> OMA0703	OUMAN GSM/GPRS -modem for EH-800	C1	313

## S105 AIR HANDLING UNIT CONTROLLER

The S105 controller for air handling units brings new precision and efficiency to air handling and climate control. The controller measures the air temperature, CO2 concentration, and relative humidity, and intelligently controls the ventilation device. Optimal ventilation enhances comfort, safeguards structures and the ventilation device itself, while also conserving energy.

One of the most significant features is the support for multiple sensors. Buildings house various types of sensors that require the controller to be configured for different measurement ranges and modes, both software-wise and hardware-wise. The S105 supports all widely-used passive temperature sensors with a simple option. It also supports the most common active temperature and pressure sensors, as well as most standard output types.



- Operating voltage: 230 VAC, 50 Hz
- The internal 24 V power source, total load capacity of max. 1 A/23 VA
- Dimensions W230 x H160 x D60
- Suitable sensors: NTC10, NTC20, NTC 1.8, NTC 2.2, Pt1000, Ni1000LG/DIN, 0-10V, 0-20mA

<b>S105</b> OMA0603	Air handling unit controller	A1	1623
------------------------	------------------------------	----	------

# Heating and air handling unit controllers

Price EUR  
Vat 0%

## OUMAN S203 HEATING CONTROLLER FOR THREE CIRCUITS

Ouman S203 is a new generation wall-mounted heating controller. Its versatility, intelligence and openness make it an ideal heating controller for all water circulation heating systems. Ouman S203 is really easy to use - informative display panel and GSM Control - feature enable reliable use anytime, anywhere. S203 can be connected to Ounet-service via Oulink-ETH-adapter (TCP/IP, optional) or other monitoring systems using a Modbus RTU.

- Operating voltage: 230 VAC, 50 Hz
- The internal 24 V power source, total load capacity of max. 1 A/23 VA
- Dimensions W230 x H160 x D60



<b>S203</b> OMA0253	Heating controller for three circuits (2 heating circuits, 1 domestic hot water circuit)	<b>A1</b>	1623
------------------------	--	-----------	------

## OUMAN C203 HEATING CONTROLLER FOR THREE CIRCUITS

Ouman C203 is a new generation DIN-rail mounted heating controller. Its versatility, intelligence and openness make it an ideal heating controller for all water circulation heating systems. Ouman C203 is really easy to use - informative display panel and GSM Control - feature enable reliable use anytime, anywhere! C203 can be connected to Ounet-service via Oulink-ETH-adapter (TCP/IP, optional) or other monitoring systems using a Modbus RTU.

- Operating voltage: 230 VAC, 50 Hz
- The internal 24 V power source, total load capacity of max. 0.4A/10VA
- Dimensions W214 (13M) x H90 x D94



<b>C203</b> OMA0044	Heating controller for three circuits (2 heating circuits, 1 domestic hot water circuit)	<b>A1</b>	1259
------------------------	--	-----------	------

## OUMAN A203 HEATING CONTROLLER FOR THREE CIRCUITS

Ouman A203 is a new generation DIN-rail mounted heating controller (control for 2 heating circuits + 1 domestic hot water control). Built in WebServer (WEB UI)

- Operating voltage: 24 VAC, 50 Hz
- Dimensions W214 (13M) x H93,3 x D96,8



<b>A203</b> OMA0650	Heating controller for three circuits (2 heating circuits, 1 domestic hot water circuit) Built in ethernet and WEB-UI	<b>A1</b>	1603
------------------------	--	-----------	------

## OUMAN H23 HEATING CONTROLLER FOR THREE CIRCUITS

Ouman H23 is suitable for every house with central water heating. H23 is open to different types of remote monitoring solutions. House heating can now be monitored and controlled from the display of a GSM-phone, PC, and from the controller. Alarm messages can be received as text messages into a GSM-phone. H23 can be connected to Ounet-service via Oulink-ETH-adapter (TCP/IP, optional) or other monitoring systems using a Modbus RTU.

- Operating voltage: 230 VAC, 50 Hz
- The internal 24 V power source, total load capacity of max. 1A/23VA
- Dimensions W230 x H160 x D60
- Three switches on the cover for circulation pumps



<b>H23</b> OMA0180	Heating controller for three circuits (2 heating circuits, 1 domestic hot water circuit)	<b>A1</b>	1488
-----------------------	--	-----------	------

## OUMAN H21 HEATING CONTROLLER FOR ONE CIRCUIT

An easy-to-use and pre-programmed heating controller. The H21 is a single-circuit, wall-mounted heating controller. It is suitable for both radiator and underfloor heating applications. The H21 can be connected to the Ounet SCADA via the M-LINK network adapter. It can also be connected to a GSM modem for control and monitoring via text messages.



<b>H21</b> OMA0692	Heating controller for one circuit	<b>A1</b>	863
-----------------------	------------------------------------	-----------	-----

## Optiflexiot ADVANCED ENERGY OPTIMISATION

Ouman Optiflexiot is a product developed for the energy optimisation of electrically heated buildings. The device uses smart and advanced algorithms to generate forecasts of future heating demands based on spot prices of electricity and weather forecasts. Forecasts help choose the most affordable hours for heating to make significant savings in heating costs. If necessary, heat is stored during the cheapest hours so that no heating is required during the most expensive hours.

The device can simultaneously control four different electrical loads independently of each other. You can select separate control methods for each:

- > Cheapest hours on demand
- > Hours cheaper than the average price
- > Fixed price limit, cheaper hours
- > PWM control by price



<b>OPTIFLEXIOT</b> OMA0680	Advanced energy optimisation for electrically heated buildings	A1	2720
-------------------------------	--	----	------

## RU23W SCREEN UNIT FOR ROOM CONTROLLER

The Ouman RU23W is a programmable 2.3" capacitive full-color display. Programming is done using a free GUI graphics editor, allowing users to create custom interfaces without programming skills. Not in direct sunlight. The device is intended for indoor installation.

- Capacitive 2.3" TFT touch screen
- Built-in 10K NTC sensor, external NTC sensor option
- IP20
- Dimensions 88x88x35. Mechanically designed to fit the common 55x55 frames (Schneider Exxact, Merten, Gira, Elko...)
- Operating voltage 12-40 VDC, power needs 0,5W
- Modbus RTU master/slave
- Operating temperature +5...+40°C



<b>RU23W</b> OMA0677	Screen unit for room controller	A1	195
-------------------------	---------------------------------	----	-----

## GSM modems

### OUMAN GSM MODEMS

Delivery includes GSM modem, DIN bracket, AC adapter, a separate power cable, data cable, and accessory bag attachment.



<b>GSMMOD 4G 1</b> OMA0702	OUMAN GSM/GPRS modem for EH-105 and EH-200 series controllers	C1	313
<b>GSMMOD 4G 2</b> OMA0703	OUMAN GSM/GPRS modem for EH-800, Ouflex M and Ouflex C controllers	C1	313
<b>GSMMOD 4G 3</b> OMA0704	OUMAN GSM/GPRS modem for Ouman Plus and Ouman Ouflex	C1	334

### ANT1 EXTERNAL ANTENNA

- Magnet antenna
- Antenna cable 2,5 m, interface FME
- Antenna extension cable ANT-C-10M, see page 9.



<b>ANT1</b> OMA0035	External antenna for Ouman GSM-modeem	C1	43
------------------------	---------------------------------------	----	----

## Casing packages

### K118 CASING PACKAGE, 18 MODULES

Contents:

- casing (enclosure rating IP 54), 1 x 18 modules, size: 403 x 333 x 129 [mm]
- transformer (230/24 VAC, capacity 10 VA)
- master switch



<b>K118</b> OMA189	Casing package 18 modules (one DIN rail)	C2	162
-----------------------	--	----	-----

### K212 CASING PACKAGE, 24 MODULES

Contents:

- casing (enclosure rating IP54); 12 + 3 modules, size: 295 x 457 x 129 [mm]
- transformer (230 / 24 VAC, capacity 40 VA)
- master switch

<b>K212</b> OMA0190	Casing package 24 modules (two DIN rails)	C2	165
------------------------	---	----	-----

### K218 CASING PACKAGE, 36 MODULES

Contents:

- casing (enclosure rating IP 54), 2 x 18 modules, size: 403 x 483 x 129 [mm]
- transformer (230/24 VAC, capacity 40 VA)
- master switch



<b>K218</b> OMA0192	Casing package 36 modules (two DIN rails)	C2	224
------------------------	---	----	-----

### K312 CASING PACKAGE, 36 MODULES

Contents:

- casing (enclosure rating IP54); 12 + 12 + 2 modules, size: 295 x 457 x 129 [mm]
- transformer (230 / 24 VAC, capacity 63 VA)
- master switch

<b>K312</b> OMA0193	Casing package 36 modules (three DIN rails)	C2	218
------------------------	---	----	-----

### K318 CASING PACKAGE, 54 MODULES

Contents:

- casing (enclosure rating IP54); 18 + 12 + 11 modules, size: 403 x 630 x 129 [mm]
- transformer 24 VAC, capacity 63 VA, 12 VDC 24W
- master switch

<b>K318</b> OMA0194	Casing package 54 modules (three DIN rails)	C2	306
------------------------	---	----	-----

### K412 CASING PACKAGE, 48 MODULES

Contents:

- casing (enclosure rating IP54); 12 + 12 + 12 + 2 modules, size: 665 x 295 x 129 [mm]
- transformer 230 / 24 VAC, capacity 63 VA
- master switch

<b>K412</b> OMA0553	Casing package 48 modules (three DIN rails)	C2	296
------------------------	---	----	-----

# Freely programmable automation units

## OUMAN OUFLEX FREELY PROGRAMMABLE AUTOMATION UNIT

Ouflex A XL is a freely programmable and DIN-rail-attachable building automation system for control and monitoring. Ouflex A XL includes 34 I/O-points, and also versatile data transfer and field bus connections. In addition, the device contains 24 VAC and 15 VDC outputs. Display unit is detachable, and can be relocated. It is possible to increase the number of I/O-points with external I/O-modules via bus connections. The DIN-standard-compatible structure of the Ouflex A device enables installation to most common cabinets. Detachable strip connectors make installation easier.



Dimensions: width 214 mm (13M), height 90 mm, depth 94 mm

### Ouflex A XL I/O-points

- 16 pcs universal measurements (UI)
- 2 pcs digital inputs (DI)
- 6 pcs 0...10V analog outputs (AO)
- 2 pcs change-over contact relays (DO)
- 4 pcs normally open contact relays (DO)
- 4 pcs 24 VAC Triac-outputs (TR)

### Data transfer connections

- 4 pcs RS-485 bus connections
- USB-host-connection
- Ethernet

### Operating voltage

- 24 VAC, 50 Hz

**Access-functionality option is built-in to the all Ouflex-devices. Activation as an option.**

Ouman Access is flexible way to get remote connecton to the automation device. Access can use internet connection that already exists in the building. That's why internet connection is immediately ready to use. Access remote connection is device-specific and the service is available the whole life cycle of the automation device.

<b>OUFLEX A XL</b> OMA0634	A more efficient and faster version compared to Ouflex A. Program capacity +50%. Same I/O points.	A1	2070
-------------------------------	---	----	------

### OPTIONS

<b>GSMMOD 4G 3</b> OMA0599	OUMAN GSM/GPRS -modem for Ouflex.	C1	334
<b>OUMAN LCD FRAME GREY</b> OMA0519	Wall installation frame for Ouflex	C1	35

## OUMAN OUFLEX M BA FREELY PROGRAMMABLE AUTOMATION UNIT

Operating voltage 24 VAC or 24 VDC, local display 132 x 64 px.

### Ouflex M BA I/O points

- 15 pcs. universal inputs (UI)
- 4 pcs. 0...10 V analog outputs (AO)
- 6 pcs. relay outputs NO, 230V 5A
- 1 PWM output (heating control)

### Data transfer connections

- 2 pcs. RS-485 bus
- 2 pcs. RS-232 bus
- 1 USB device
- Ethernet with M-LINK



<b>OUFLEX M BA</b> OMA0496	Freely programmable automation unit	A1	1056
<b>OUFLEX M LCD KIT GREY</b> OMA0527	Ouflex M LCD with cable and frame	C1	199

## OUFLEX AX FREELY PROGRAMMABLE AUTOMATION UNIT WITHOUT DISPLAY

Ouflex AX is a freely programmable and DIN-rail-attachable building automation system for control and monitoring. Ouflex AX includes 28 I/O-points, and also versatile data transfer and field bus connections. An external display module can be connected to the device.

- > It is possible to increase the number of I/O-points with external I/O-modules via bus connections (Modbus RTU).
- > There is a built in Web UI in the Ouflex AX. Connection to the Web UI can be done through LAN or internet.
- > Ouflex AX is programmed with the Ouflex BA Tool program, and the finished program is downloaded to the Ouflex AX device via ethernet or USB C (USB 2).
- > M-Bus Master max.10 devices, expandable with e.g. Elvaco CMEx50
- > PWM inputs and outputs enable control and monitoring of PWM-controlled pumps (according to VDMA 24224 2014-03 standard).



Width 175 mm, height 93,6 mm, depth 72,13 mm



<b>OUFLEX AX</b> OMA0679	Freely programmable automation unit without display	A1	1612
-----------------------------	---	----	------

# I/O-Extension units

Price EUR  
Vat 0%

I/O-extension units are used to increase I/O capacity of the Ouflex device. Units are DIN-rail attachable and possible to connect to bus. They are easy to decentralize as needed. I/O-extension units have the necessary 24 VAC power supply connectors for field devices.



**Operating voltage** Measurements: width 213,5 mm (13M), height 90 mm, depth 93,3 mm

<b>FLEX COMBI 32</b> OMA0526	16 pcs universal inputs (UI) 6 pcs 0...10V analog outputs (AO)	2 pcs change-over contact relays (DO) 4 pcs normally open contact relays (DO) 4 pcs 24 VAC Triac-outputs (TR)	A1	844
<b>FLEX COMBI 21</b> OMA0524	9 pcs universal inputs (UI) 2 pcs 0...10V analog outputs (AO)	2 pcs change-over contact relays (DO) 4 pcs normally open contact relays (DO) 4 pcs 24 VAC Triac-outputs (TR)	A1	561
<b>FLEX UI 16</b> OMA0523	16 pcs universal inputs (UI)		A1	370

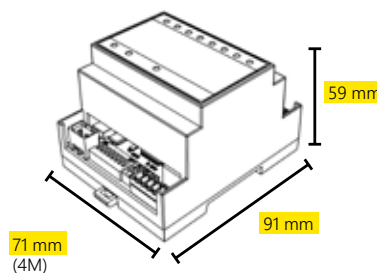


**FLEX UI 8** is a DIN-rail-attachable Modbus RTU input module which can be connected to RS-485 bus. It has 8 configurable universal inputs.

Supported signals and sensor types are:

- Transmitters 0-10 V or 0/4-20 mA
- Supported passive sensors: NTC10, NTC1.8, NTC2.2 ja NTC20 Ni 1000 LG, Ni 1000 DIN 43760, Pt 1000
- Potential free digital contact
- Potential free pulse counter (min 30ms)

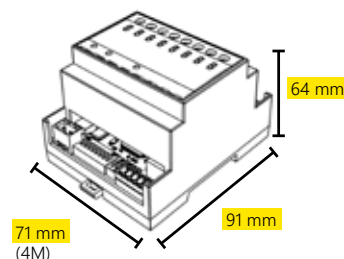
Operating voltage: 24 VAC/VDC (-10%...+20%), 50/60 Hz



**FLEX AO 8** is a DIN-rail-attachable Modbus RTU output module which can be connected to RS-485 bus. It has 8 analog outputs.

- Output voltage range 0...10V
- Output current max. 7mA/output
- Each output has AUTO-MANUAL switch.
- Manual position is controlled via potentiometer in each channel separately

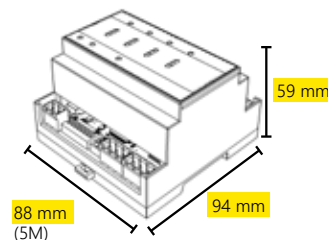
Operating voltage: 24 VAC/VDC (-10%...+20%), 50/60 Hz



**FLEX DO 4-R** is a DIN-rail-attachable Modbus RTU relay unit which can be connected to RS-485 bus. It has 4 relay controls.

- In each relay control it is possible to choose either the automatic control or forced ON or OFF control (ON - AUTO- OFF).
- Change-over contact relay 230 VAC/ 4A or 24 VDC/4A
- Easy to install in electrical cabinet

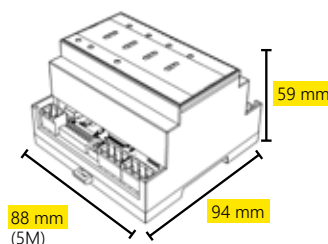
Operating voltage: 24 VAC/VDC (-10%...+20%), 50/60 Hz



**FLEX DO 4-TRS** is a DIN-rail-attachable Modbus RTU triac module which can be connected to RS-485 bus. It has 4 AC triac switches.

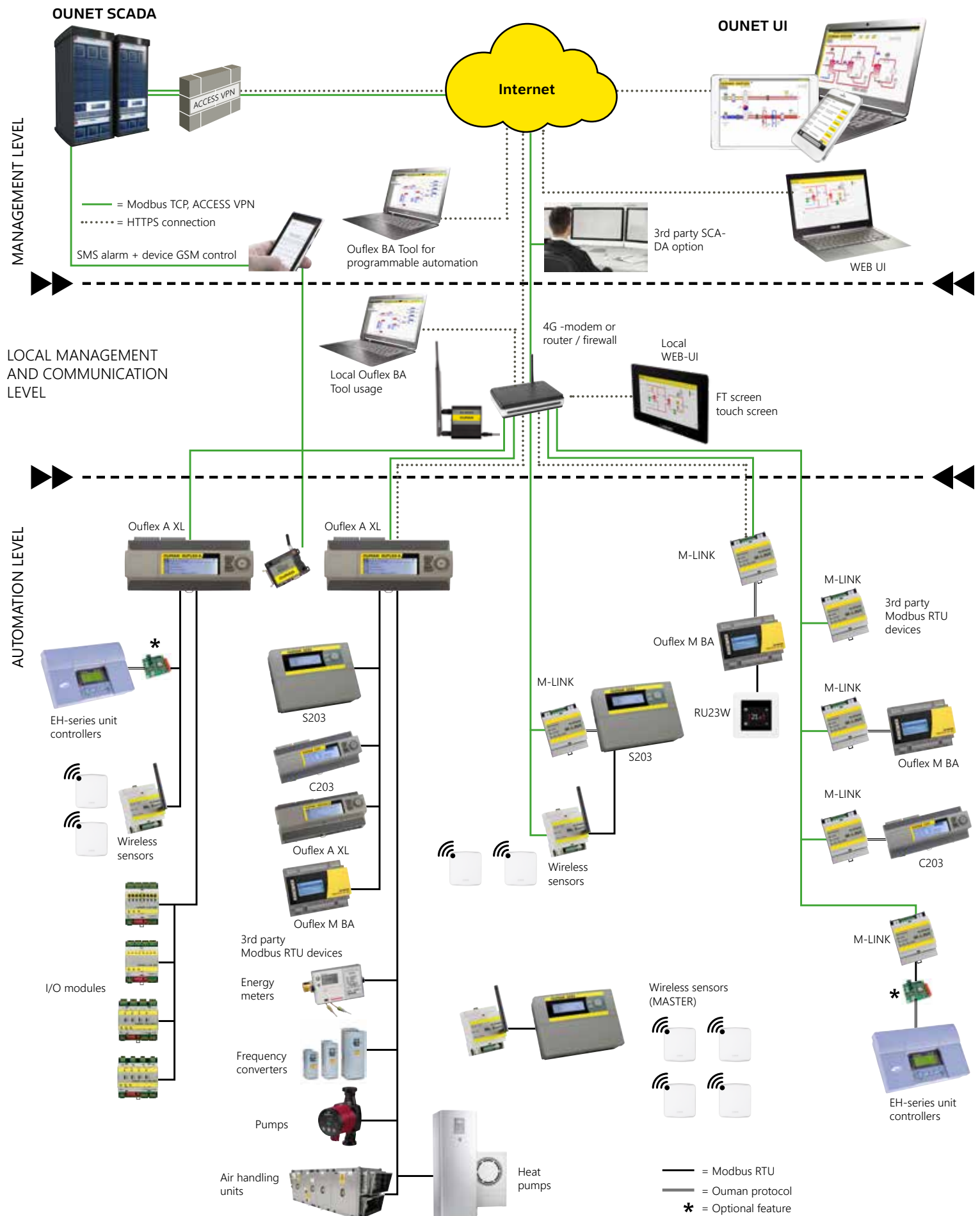
- Each triac control has 3 stage switch for selection between automatic control, forced ON or OFF (ON - AUTO - OFF).
- 24...230VAC, max 1A/output
- Potential-free AC switch
- DC controls require a supplementary relay in installation

Operating voltage: 24 VAC/VDC (-10%...+20%), 50/60 Hz



<b>FLEX UI 8</b> OMA0471	Universal input module	A1	340
<b>FLEX AO 8</b> OMA0472	Universal output module	A1	288
<b>FLEX DO 4-R</b> OMA0473	Universal relay module	A1	245
<b>FLEX DO 4-TRS</b> OMA0474	Universal triac module	A1	223

# Building automation system topology



# Ouman system components

MANAGEMENT LEVEL



## Ouman Access server

- Secure VPN connection
- Plug & play connectivity
- Including name server (DHCP)
- Creating easy access and secure connection to devices.
- Customer register functionality for OEMs offers capability to connect devices securely to internet and gives possibility to create own solution based web interface for specific service

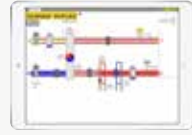


## Ouflex BA Tool

- Uses secure VPN connection to devices in the field
- Remote plug & play connection to devices
- Upload/download of applications
- Online process monitoring
- Automatic updates
- Free trial for 14 days
- Software license available on demand for certified users



OUNET browser UI (HTML5)



OUNET in mobile or tablet (HTML5)



## OUNET SCADA solution in cloud service

- Cloud solution offers maintenance free usage
- Use your OUNET from any location by using web browser
- Only one login is needed to access all your facilities/targets
- Enables easy process management and system fine tuning
- Alarm routing by using email and SMS. Also alarm groups available.
- Target calendar with diary function for easy follow up of tasks
- Trend data is stored to cloud for further analysis and reports
- Flexible report generation for all stored trend data
- Automated report sending to selected receivers

LOCAL MANAGEMENT AND COMMUNICATION LEVEL



## 4G-MOD2

- Compact and meets industry level requirements
- Easy installation
- Optional external antenna available
- Suitable for any operator SIM card which supports mobile data connection



## GSM SMS Modem

- Compact and meets industry level requirements
- Easy installation
- Optional external antenna available
- SMS alarm and device GSM control via SMS



## FT screen touch screen

- Can be used for ounet.fi or local WEB UI browsing
- Capacitive touch screen
- Available in size 7", 10" and 15"

AUTOMATION LEVEL

## Ouflex A XL



## Programmable controller platforms

- Three device platforms available (A, C and M)
- Platform specific template available in Ouflex Tool library
- Easy and fast forward programming with ready made library components
- Built-in Access and TCP/IP modbus -with C and M platforms M-LINK device is required
- Remote device management
- Read/Write functions trough controller gateway
- Easy to connect new Modbus devices (TCP/IP and RTU)
- External display available for C & M platforms – A platform comes with detachable display



Ouflex M BA



## Ouman Wireless

- Easy and fast installation
- Any browser can be used to access base station data
- Good radio coverage with 868Mhz mesh network
- Built-in secure Access VPN functionality in WL-base
- Sensors can be used as routers with external power supply
- Sensors are providing temperature, humidity and additional auxiliary measurement
- Sensors are covered with standard AA batteries
- Modbus TCP/IP and RTU communication
- Intelligent calculation of collected data in base station
- Automated average calculation of measurements e.g. for heating curve optimization

## M-LINK



## M-LINK – new model with more functions

- Can be used similarly like previous Oulink model
- Provides remote tool management for C & M platforms
- Modbus TCP/IP to Modbus RTU gateway converter for any 3th party RTU slave device
- OPC UA communication protocol



## Ouflex I/O modules

- These I/O modules can be used to expand controller IO capabilities
- Modules are compatible with any systems supporting Modbus RTU
- UI8 is configurable input module with resistive sensors, digital contacts, pulse counters and transmitters with voltage and mA outputs
- AO8 is analog output module with 8 pcs of 0-10V outputs. Selection between automatic and manual state with switches.
- DO4-R module includes four bistable relays.
- DO4-TRS is module with four triac switches from 24VAC up to 240VAC



## 3rd party Modbus RTU devices

Heat pumps

Energy meters

Pumps



Air handling units



Frequency converters

## S203



## C203



## OUMAN unit controllers

- New generation controllers based on Ouflex platform
- Built-in Modbus RTU bus
- Easy configuration with setup wizard
- Software version can be updated by using SD memory card
- With OULINK device optional Modbus TCP/IP connection and Access VPN functionality for secure connection and easy integration to OUNET SCADA system.

# Ouman Ounet

Price EUR  
Vat 0%

## OUNET WEB BASED SCADA FOR BUILDING AUTOMATION

Ounet is a modern web-based SCADA for building automation. It enables fluent control of technical building services from any location and whenever needed. Ounet provides effective, easy-to-use tools for property management and maintains the appropriate conditions.

<b>OUNET</b>	Web based SCADA for building automation	<b>270/year/target/1500 points</b>
--------------	---	------------------------------------



## Technical details

Languages:	Finnish, English, Swedish, Estonian
Technology:	HTML5
Browsers:	Internet Explorer/Edge, Chrome, Firefox, Safari
Alarm forwarding:	SMS and email
Address:	www.ounet.fi

### Customer devices

Operating systems:	Windows, Android, IOS, Linux
Recommended screen size:	3,2" and larger
Screen technology:	Passive screens or touchscreens
Display modes:	Mobile and desktop

## FT-Screen touch screen panels

- Cutout installation, fits to covers and doors, IP65
- Capacitive Android touch screen
- Can be used for browsing ounet.fi or local WEB UI



<b>FT-SCREEN 7</b> OMB0523	iSMA-D-PA7C-B1-EU 7" capacitive touch screen	C2	614**
<b>FT-SCREEN 10</b> OMB0517	iSMA-D-PA10C-B1-EU 10.1" capacitive touch screen	C2	962**
<b>FT-SCREEN 15</b> OMB0519	iSMA-D-PA15C-B1-EU 15.6" capacitive touch screen	C2	1166**
<b>FT-SCREEN 10 FRAME</b> OMA0640	Surface mounting frame for 10" touch screen	C2	32

## M-LINK interface converter

The M-LINK interface converter can be used to connect Ouman controllers and 3rd party equipment via the RTU interface to the Ounet SCADA solution. Device can be also used to convert Modbus RTU protocol to Modbus TCP/IP protocol. This enables connectivity to other SCADA systems by using Modbus TCP/IP protocol. Maximum quantity of connected RTU devices is 10 units.

By connecting device to internet connection, secure VPN connection is established between M-LINK device and Ounet SCADA solution. VPN connection is built up by using OUMAN Access solution, which is secure M2M connection, which is provided for all OUMAN devices using internet connection.

If local area network connection does not exist, device can be connected to internet by using the 4G-MOD1 Modem.

Internal WEB-server enables easy connectivity to OUMAN unit controllers. For example S203, C203, H23, EH-203 and EH-105 controllers can be configured by using ready made templates which can be selected from M-LINK WEB-server interface. Server can also provide point transfer between devices within same IP network and buffering of trend data. With OUFLEX TOOL server can be programmed to use Modbus description files to be used for 3rd party devices.

M-LINK can be connected to one OUMAN controller through C-serial RJ45 connector and this enables updating of applications for example to OUFLEX M BA unit.



### Communication protocols:

- Modbus RTU
- Modbus TCP / IP

<b>M-LINK REV B</b> OMA0673	Interface converter with ACCESS-function	C1	406
--------------------------------	--	----	-----

## Ouman 4G-internet product

### WIRELESS 4G-COMMUNICATION

4G-MOD1 is a wireless connection to Access -devices or for their verification. You can buy the subscription from your preferred operator.

<b>4G-MOD2</b> OMA0654	4G-modem	C1	288
---------------------------	----------	----	-----

### ADDITIONAL PRODUCTS

<b>ANT2</b> OMB0009	Omnidirectional 3G-antena with 8 meter cable	C1	227
<b>ANT-C-10M</b> OMB0012	10 meter extension cable for GSM- and 3G-antenna	C1	58

### SWITCH-4P-DIN

The switch can be used to connect different parts of the local network and expand the existing network. The switch can be used to connect a house network and several devices in the network, such as controllers.

The operating voltage of the switch is connected to a 24VAC/24VDC terminal block, which means that the operating voltage can be taken, for example, directly from the controller or from a transformer that supplies the controllers.



<b>SWITCH-4P-DIN</b> OMA0638	DIN-rail mounted Ethernet switch with 4 ports	A1	76
---------------------------------	---	----	----

# Channel adapter cards and converters

Price EUR  
Vat 0%



## M-BUS/MODBUS converters

<b>MBUS-MODBUS-2</b> OMB0509	M-Bus/Modbus converter (max. 2 devices)	C2	230
<b>MBUS-MODBUS-8</b> OMB0510	M-Bus/Modbus converter (max. 8 devices)	C2	287
<b>MBUS-MODBUS-80</b> OMB0511	M-Bus/Modbus converter (max. 80 devices)	C2	711

## Casing solutions

### LM1-HC 4G Remote monitoring solution for unit controllers (Ouman C203, S203 and EH-203)

Content:

- M-LINK interface converter pre programmed for Ounet remote control and monitoring, room compensation also included
- Space reservation for WL-Base gateway unit
- 4G modem
- Casing package with power supply
- Ounet SCADA setup



#### NOTE!

- WL-Base and wireless sensors are sold separately
- Ounet contract is not included
- 4G-L3 subscription is not included

<b>LM1-HC 4G</b> OMA0540	Remote monitoring solution for unit controllers	A1	1598
-----------------------------	---	----	------

# Temperature sensors and room units

Price EUR  
Vat 0%

## TMO OUTDOOR SENSOR

Outdoor sensor measures the outside air temperature. The sensor color is white-gray, so the measuring difference caused by solar radiation is as small as possible. The sensor comes with a cable gland.



NTC10: For Ouman controllers  
Pt1000: For Danfoss and Honeywell controllers  
Ni1000LG: For Siemens controllers

			NTC10	Pt1000	Ni1000LG
<b>TMO</b> OMA0015	Outdoor sensor	A1	33	36	43

## TMR ROOM SENSORS

The room sensor can be used with Ouman air handling unit controller EH-105 as well as the EH-200 and EH-800 series heating controllers. Position the room sensor so that it measures the facility's average temperature.

TMR/SP is equipped with temperature measurements and fine-tuning knob. It can change the EH-105 and EH-800 equipment room temperature setpoint -5 ... 4 °C.



NTC10 Pt1000 Ni1000LG

<b>TMR</b> OMA0011	Room sensor	A1	50	57	70
<b>TMR/SP</b> OMA0310	Huonelämpötila-anturi kaukoasetuspotentiometrillä	A1	57		

## TMS SURFACE SENSOR

The surface sensor is used to measure the temperature of the liquid flowing in the pipe. The sensor is installed on the surface of the pipe with a fastening strap. Suitable for pipe sizes DN 20...80.



NTC10 Pt1000 Ni1000LG

<b>TMS</b> OMA0312	Surface sensor	A1	28	-	-
<b>TMS-C/NTC10</b> OMA0497	Surface sensor with connector, NTC10	A1	27	-	-
<b>TMS-2M</b> OMA0016	Surface sensor, connection cable 2 m	A1	29	47	54
<b>TMS-3M</b> OMA0318	Surface sensor, connection cable 3 m	A1	30	-	-
<b>TMS-4M</b> OMA0321	Surface sensor, connection cable 4 m	A1	32	49	57

## TMW-C CONNECTION CABLES

<b>TMW-C KYTKENTÄ KAAPELI 2 M</b> OMA0516	2m connection cable for temperature sensors with connector	A1	15		
<b>TMW-C KYTKENTÄ KAAPELI 3 M</b> OMA0626	3m connection cable for temperature sensors with connector	A1	18		

# Temperature sensors

## TMW WATER SENSOR



The water sensors installed on the water pipes are suitable for heating and domestic hot water control. Sensors are made of stainless steel (AISI 304), but the TMW-300 sensor's thread nipple is made of brass. Sensors come with immersion tube of different lengths as follows (Ø 4 mm). TMW-50, -100 and -210 are suitable for pressure class PN16 and TMW-300 for PN10.

NTC10: For Ouman controllers  
Pt1000: For Danfoss and Honeywell controllers  
Ni1000LG: For Siemens controllers

			NTC10	Pt1000	Ni1000LG
<b>TMW-50</b> OMA0012	Water sensor, 50 mm, thread R1/2"	A1	59	70	77
<b>TMW-100</b> OMA0013	Water sensor, 100 mm, thread R1/2"	A1	60	78	78
<b>TMW-210</b> OMA0340	Water sensor, 210 mm, thread R1/2"	A1	63	75	
<b>TMW-300</b> OMA0343	Water sensor, 300 mm (adjustable), thread R1/2"	A1	67	86	

## TMW-ST WATER SENSOR WITH PROTECTIVE POCKET

The water sensors installed on the water pipes are suitable for heating and domestic hot water control (also with aggressive water). Immersion tubes are made of stainless steel (AISI 304) and the thread nipple is made of same material. Sensor's tube is a diameter of 4 mm and protection tube 5 mm. Sensors are suitable for pressure class PN16.



			NTC10	Pt1000	Ni1000LG
<b>TMW-81ST</b> OMA0352	Water sensor and protection pocket 80 mm, thread R1/2"	A1	111	133	116
<b>TMW-121ST</b> OMA0330	Water sensor and protection pocket 120 mm, thread R1/2"	A1	92	112	116
<b>TMW-201ST</b> OMA0337	Water sensor and protection pocket 200 mm, thread R1/2"	A1	100	110	114

## TMI ICE FROST SENSOR

Ice frost sensors are used to measure the air conditioning ice frost function and return water regulation temperature. The sensor is made of stainless steel (AISI 304). A sensor has 2 m long immersion pipe, which has a diameter of 4 mm.



			NTC10	Pt1000	Ni1000LG
<b>TMI</b> OMA0293	Ice frost sensor, R 1/4"	A1	60	79	83

## TMD DUCT SENSOR

Duct sensor is used for air conditioning duct temperature measurements. Brass protection tube has a diameter of 8 mm and a length of 250 mm.



			NTC10	Pt1000	Ni1000LG
<b>TMD</b> OMA0014	Duct sensor	A1	48	57	68

## PTL-10 WATER PRESSURE SENSOR

- Operating voltage 15-24 VDC / 24 VAC (+-10%)
- Output 0-10V
- Thread G1/4, includes adapter G1/4-G1/2
- IP 65



<b>PTL-10-V</b> OMBO470	Water pressure sensor	A2		199	
----------------------------	-----------------------	----	--	-----	--

# Ouman wireless sensor system

Price EUR  
Vat 0%

The wireless Ouman sensor system enables quick and easy collection of precise room temperature data in a building without laborious laying of cables and drilling of walls. The sensor system comprises a gateway unit, wireless sensors in router mode that are connected to the mains, and battery-operated wireless sensors. A predefined description file makes it easy to connect the wireless sensors to a SCADA system. In the event of failure, a damaged sensor can be replaced without changing the template file. This makes the installation of the replacement sensor quicker and easier.

## WL-BASE GATEWAY UNIT

- Linux based
- Access feature
- Built-in Web server to facilitate installation
- Separate installation mode with a short 10 s. measurement interval
- Measurement interval freely adjustable (1-240 min)
- Ethernet, Modbus TCP/IP
- RS-485, Modbus

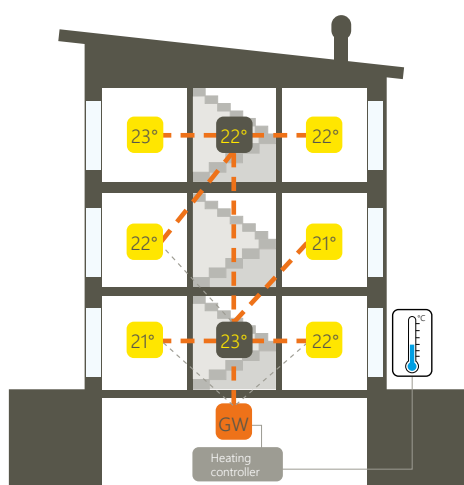


## WL-TEMP-RH 2.1 WIRELESS TEMPERATURE AND HUMIDITY SENSOR

- Built-in antenna
- 2 x AA batteries (does not include)
- In addition to serving as a measuring sensor, the same antenna also serves a router if connected to the mains (5–12V DC, 20 mA)
- Measuring accuracy  $\pm 0.2$  °C (the same as Ouman controllers)
- Operating temperature: 0–50 °C
- Thanks to advanced system circuit the covering range of the sensors is not impaired when the battery is low.
- 868 MHz Mesh technology
- Connector for outdoor temperature sensor (with a fixed cable connection to outside)



<b>WL-BASE 2.1</b> OMA0489	Gateway unit	<b>A1</b>	454
<b>WL-TEMP-RH 2.1</b> OMA0579	Wireless temperature and humidity sensor	<b>A1</b>	130
<b>WL-SOCKET-ROUTER 2.1</b> OMA0582	Fixed mounting router in staircase (on top of the present electric socket)	<b>A1</b>	233
<b>WL-TEMP-RH-CO2-BAT 2.1</b> OMA0743	Battery powered wireless temperature and humidity sensor with CO2 measuring.	<b>A1</b>	310
<b>WL-TEMP-RH-PD</b> OMA0587	Wireless temperature and humidity sensor with pressure difference measuring.	<b>A1</b>	292
<b>WL-ROUTER POWER</b> OMA0430	Power unit for temperature sensor 5 VDC (needed when operating as a router)	<b>A1</b>	26
<b>WL-BASE-POWER</b> OMA0448	Power unit for WL-Base, 24 VDC plug	<b>C1</b>	37
<b>WL-ANT</b> OMB0473	Antenna for WL-Base, 4m cable, magnetic fixing	<b>C1</b>	45
<b>WL-BATTERY-AA-LIT</b> OMB0472	Battery package for wireless temperature sensors. Includes 10 pcs. AA lithium		26



- = WL-Base
- = WL-temp (router)
- = WL-temp

! no stock product

# Energy meter and transmitters

## DPT DIFFERENTIAL PRESSURE TRANSMITTER

The DPT is an electronic differential pressure transmitter used for measuring low pressures of air and non-aggressive gasses in order to monitor and control pressures in building automation, HVAC and clean room systems. Measuring range can be selected from -100 Pa and 2500 Pa between. Transmitter has an automatic reset.



<b>DPT</b> OMB0033	Differential pressure transmitter	A1	222
<b>DPT/D</b> OMB0035	Differential pressure transmitter with display	A1	257

## PDI PRESSURE DIFFERENCE MANOMETER, IP 54

- Measuring range 0 - 600 Pa
- Operating temperature -40°C...+60°C



<b>PDI</b> OMB0298	Pressure difference manometer MM 200600	A2	126
-----------------------	---	----	-----

## PDS PRESSURE DIFFERENCE SWITCH, IP 54

- Different measuring ranges
- Connection difference 30 Pa
- Operating temperature -20°C...+60°C



<b>!</b> <b>PDS-300</b> OMB0310	Pressure difference switch, 40 - 600 Pa, PS600	A2	38
<b>PDS-600</b> OMB0301	Pressure difference switch, 40 - 600 Pa, PS600	A2	39

## PRESSURE TRANSMITTER FOR WATER



<b>MLH+KYTKENTÄKAAPELI</b> OMA0618	Pressure transmitter for water, 0-10bar, 0-10V, Thread G1/4	A1	177
---------------------------------------	---	----	-----

## 5-CDPT 5-CHANNEL DIFFERENTIAL PRESSURE TRANSMITTER

The 5-CDPT is a differential pressure transmitter with 5 measurement channel and communicates via the Modbus RTU bus.



<b>5-CDPT</b> OMA0635	5-channel differential pressure transmitter	A1	642
--------------------------	---	----	-----

## OTHER TRANSMITTERS

Transmitters input voltage 24 AC/DC, measuring message 0-10 VDC.

<b>HDH</b> OMB0055	CO2 and temperature sensor in room	A2	528
<b>HDH-N</b> OMB0060	CO2 and temperature sensor in room with display	A2	625
<b>HDK</b> OMB0061	CO2 and temperature sensor in duct	A2	689
<b>HDK-N</b> OMB0062	CO2 and temperature sensor in duct with display	A2	782
<b>KLH 100</b> OMB0113	Room moisture and temperature transmitter	A2	216
<b>KLH 100-N</b> OMB0114	Room moisture and temperature transmitter with display	A2	290
<b>VPL 16</b> OMB0428	Pressure transmitter for water network, below 16 bar	A2	311
<b>VPL 16-N</b> OMB0429	Pressure transmitter for water network with display, below 16 bar	A2	372
<b>LUX 34</b> OMB0132	Lux sensor for outdoor use	A2	305
<b>KLK 100</b> OMB0115	Duct moisture and temperature transmitter	A2	311
<b>KLK 100-N</b> OMB0116	Duct moisture and temperature transmitter with display	A2	372
<b>AVT</b> OMB0609	Air flow sensor in the duct	A2	238

**!** no stock product

**LK+ and FTK+... DUCT TRANSMITTERS**

\*)

<b>LK+ CO2/TE</b> OMB0566	Duct transmitter, temperature and CO2	A2	407
<b>LK+ CO2/TE-D</b> OMB0567	Duct transmitter, temperature and CO2 with display	A2	457
<b>LK+ CO2/rH/TE</b> OMB0568	Duct transmitter, temperature, humidity and CO2	A2	647
<b>LK+ CO2/rH/TE-D</b> OMB0569	Duct transmitter, temperature, humidity and CO2 with display	A2	727
<b>FTK+ 140 VV</b> OMB0570	Duct transmitter, temperature and humidity	A2	227
<b>FTK+ 140-D</b> OMB0571	Duct transmitter, temperature and humidity with display	A2	280

**UD and DPL... WATER TRANSMITTERS**

\*)

<b>UD-V</b> OMB0572	Screen unit for DLF and DPL V models	A2	140
<b>DPL1</b> OMB0573	Water pressure difference transmitter, 0..+1 bar	A2	727
<b>DPL2,5</b> OMB0574	Water pressure difference transmitter, 0..+2,5 bar	A2	663
<b>DPL4</b> OMB0575	Water pressure difference transmitter, 0..+4 bar	A2	663
<b>DPL6</b> OMB0576	Water pressure difference transmitter, 0..+6 bar	A2	727

**NOVOS... ROOM TRANSMITTERS**

\*)

<b>NOVOS 3 rH/TE</b> OMB0580	Room transmitter, humidity and temperature	A2	167
<b>NOVOS 3 CO2/TE</b> OMB0562	Room transmitter, temperature and CO2	A2	328
<b>NOVOS 3 CO2/rH/TE</b> OMB0564	Room transmitter, temperature, humidity and CO2	A2	562

**MWF... DUCT AVERAGE TEMPERATURE SENSORS**

\*)

<b>MWF/P NTC10k</b> OMB0583	Duct average temperature sensor, NTC 10K 400MM	A2	133
<b>MWF/P NTC20k</b> OMB0584	Duct average temperature sensor, NTC 20K 400MM	A2	183
<b>MWF/P NTC1,8k</b> OMB0585	Duct average temperature sensor, NTC 1.8K 400MM	A2	183
<b>MWF/P PT1000</b> OMB0586	Duct average temperature sensor, PT1000 400MM	A2	189
<b>MWF/P Ni1000TK5000</b> OMB0587	Duct average temperature sensor, Ni1000TK5000 400MM	A2	189
<b>MWF/L NTC10k-L3</b> OMB0588	Duct average temperature sensor, NTC 10K 3000MM	A2	192
<b>MWF/L NTC10k-L6</b> OMB0589	Duct average temperature sensor, NTC 10K 6000MM	A2	267
<b>MWF/L NTC20k-L3</b> OMB0590	Duct average temperature sensor, NTC 20K 3000MM	A2	222
<b>MWF/L NTC20k-L6</b> OMB0591	Duct average temperature sensor, NTC 20K 6000MM	A2	267
<b>MWF/L PT1000-L3</b> OMB0592	Duct average temperature sensor, PT1000 3000MM	A2	222
<b>MWF/L PT1000-L6</b> OMB0593	Duct average temperature sensor, PT1000 6000MM	A2	267
<b>MWF/L Ni1000TK5000-L3</b> OMB0594	Duct average temperature sensor, Ni1000TK5000 3000MM	A2	232
<b>MWF/L Ni1000TK5000-L6</b> OMB0595	Duct average temperature sensor, Ni1000TK5000 6000MM	A2	277
<b>MWF/L Ni1000-L3</b> OMB0596	Duct average temperature sensor, Ni1000 3000MM	A2	232
<b>MWF/L Ni1000-L6</b> OMB0597	Duct average temperature sensor, Ni1000 6000MM	A2	277

## 2-way valves for district heating

### VD 2-WAY VALVES FOR DISTRICT HEATING

These valves are designed especially for flow control in hydraulic systems with high temperatures and pressures, such as district heating systems. Can be used in combination with actuators M31C150 (heating) and M41A15 (domestic hot water)



**Note.** Connections set must be ordered separately. Is not included in the price.

CONNECTION SETS:

\*)

<b>VD215-0.25</b> OMA0386	DN 15	Kv 0.25	External thread R 3/4", flush surface with seal	L15UK-1/2" or L15HI	A3	204
<b>VD215-0.4</b> OMA0387	DN 15	Kv 0.4	External thread R 3/4", flush surface with seal	L15UK-1/2" or L15HI	A3	204
<b>VD215-0.63</b> OMA0388	DN 15	Kv 0.63	External thread R 3/4", flush surface with seal	L15UK-1/2" or L15HI	A3	204
<b>VD215-1.0</b> OMA0389	DN 15	Kv 1.0	External thread R 3/4", flush surface with seal	L15UK-1/2" or L15HI	A3	204
<b>VD215-1.6</b> OMA0390	DN 15	Kv 1.6	External thread R 3/4", flush surface with seal	L15UK-1/2" or L15HI	A3	204
<b>VD220-2.5</b> OMA0391	DN 20	Kv 2.5	External thread R 1", flush surface with seal	L20UK-3/4", L20SK-1/2", L20HI	A3	285
<b>VD220-4.0</b> OMA0392	DN 20	Kv 4.0	External thread R 1", flush surface with seal	L20UK-3/4", L20SK-1/2", L20HI	A3	285
<b>VD225-6.3</b> OMA0393	DN 25	Kv 6.3	External thread R 1 1/4", flush surface with seal	L25UK-1", L25SK, L25HI	A3	375
<b>VD232-10</b> OMA0394	DN 32	Kv 10	External thread R 1 1/2", flush surface with seal	L25SK-1" or L32HI	A3	508

### V5016A... 2-WAY VALVES FOR DISTRICT HEATING

Cast iron, T max 150 °C, stroke length 20 mm, PN 16,

Pressure balanced district heating valve.

Can be used in combination with actuators: ML6420..., ML6425..., ML7420..., ML7425...



\*)

<b>V5016A1010</b> HON258	DN 15	Kv 0,4	Flanged (length 130 mm)	A3	847
<b>V5016A1028</b> HON259	DN 15	Kv 0,63	Flanged (length 130 mm)	A3	712
<b>V5016A1036</b> HON260	DN 15	Kv 1,0	Flanged (length 130 mm)	A3	872
<b>V5016A1044</b> HON261	DN 15	Kv 1,6	Flanged (length 130 mm)	A3	872
<b>V5016A1051</b> HON262	DN 15	Kv 2,5	Flanged (length 130 mm)	A3	793
<b>V5016A1069</b> HON263	DN 15	Kv 4,0	Flanged (length 130 mm)	A3	792
<b>V5016A1077</b> HON264	DN 20	Kv 6,3	Flanged (length 150 mm)	A3	834
<b>V5016A1085</b> HON265	DN 25	Kv 10	Flanged (length 160 mm)	A3	1036
<b>V5016A1093</b> HON266	DN 32	Kv 16	Flanged (length 180 mm)	A3	1202
<b>V5016A1101</b> HON267	DN 40	Kv 25	Flanged (length 200 mm)	A3	1404
<b>V5016A1119</b> HON268	DN 50	Kv 40	Flanged (length 230 mm)	A3	1778
<b>V5016A1127</b> HON269	DN 65	Kv 63	Flanged (length 290 mm)	A3	2351
<b>V5016A1135</b> HON270	DN 80	Kv 100	Flanged (length 310 mm)	A3	2838
<b>V5016A1143</b> HON076	DN 100	Kv 160	Flanged (length 350 mm)	A3	4386
<b>V5016A1150</b> HON077	DN 125	Kv 250	Flanged (length 400 mm)	A3	6490
<b>V5016A1168</b> HON078	DN 150	Kv 360	Flanged (length 480 mm)	A3	7079

! no stock product

\*) We reserve the right to change the prices according to Honeywell.

## 2-way valves for district heating

### V5025A... 2-WAY VALVES FOR DISTRICT HEATING

Cast iron, Pressure balanced district heating valve., PN25, T max 200 °C

Suitable actuators: ML6420..., ML6421..., ML6425..., ML7420..., ML7421..., ML7425



\*)

! <b>V5025A1027</b> HON080	DN 15	Kv 0.63	Flanged (L=130 mm)	Stroke 20 mm	A3	1219
! <b>V5025A1035</b> HON081	DN 15	Kv 1.0	Flanged (L=130 mm)	Stroke 20 mm	A3	1219
! <b>V5025A1050</b> HON083	DN 15	Kv 2.5	Flanged (L=130 mm)	Stroke 20 mm	A3	1219
! <b>V5025A1068</b> HON084	DN 15	Kv 4.0	Flanged (L=130 mm)	Stroke 20 mm	A3	1219
! <b>V5025A1076</b> HON085	DN 20	Kv 6.3	Flanged (L=150 mm)	Stroke 20 mm	A3	1238
! <b>V5025A1084</b> HON086	DN 25	Kv 10	Flanged (L=160 mm)	Stroke 20 mm	A3	1258
! <b>V5025A1092</b> HON087	DN 32	Kv 16	Flanged (L=180 mm)	Stroke 20 mm	A3	1376
! <b>V5025A1100</b> HON089	DN 40	Kv 25	Flanged (L=200 mm)	Stroke 20 mm	A3	1730
! <b>V5025A1118</b> HON090	DN 50	Kv 40	Flanged (L=230 mm)	Stroke 20 mm	A3	2005
! <b>V5025A1126</b> HON091	DN 65	Kv 63	Flanged (L=290 mm)	Stroke 20 mm	A3	2222
! <b>V5025A1134</b> HON092	DN 80	Kv 100	Flanged (L=310 mm)	Stroke 20 mm	A3	3245
! <b>V5025A1142</b> HON093	DN 100	Kv 160	Flanged (L=350 mm)	Stroke 38 mm	A3	4818
! <b>V5025A1159</b> HON094	DN 125	Kv 250	Flanged (L=400 mm)	Stroke 38 mm	A3	8495

### V5049A... 2-WAY VALVES FOR DISTRICT HEATING

Cast iron, Pressure balanced district heating valve., PN40, T max 220 °C

Suitable actuators: ML6420..., ML6421..., ML6425..., ML7420..., ML7421..., ML7425



\*)

! <b>V5049A2043</b> HON110	DN 15	Kv 0.63	Flanged (L=130 mm)	Stroke 20 mm	A3	2950
! <b>V5049A1433</b> HON097	DN 15	Kv 1.6	Flanged (L=130 mm)	Stroke 20 mm	A3	2458
! <b>V5049A1441</b> HON098	DN 15	Kv 2.5	Flanged (L=130 mm)	Stroke 20 mm	A3	2458
! <b>V5049A1458</b> HON099	DN 15	Kv 4.0	Flanged (L=130 mm)	Stroke 20 mm	A3	2458
! <b>V5049A1508</b> HON100	DN 20	Kv 6.3	Flanged (L=150 mm)	Stroke 20 mm	A3	2557
! <b>V5049A1565</b> HON101	DN 25	Kv 10	Flanged (L=160 mm)	Stroke 20 mm	A3	2753
! <b>V5049A1573</b> HON102	DN 32	Kv 16	Flanged (L=180 mm)	Stroke 20 mm	A3	2911
! <b>V5049A1581</b> HON103	DN 40	Kv 25	Flanged (L=200 mm)	Stroke 20 mm	A3	3107
! <b>V5049A1599</b> HON104	DN 50	Kv 40	Flanged (L=230 mm)	Stroke 20 mm	A3	5191
! <b>V5049A1607</b> HON105	DN 65	Kv 63	Flanged (L=290 mm)	Stroke 20 mm	A3	6490

! no stock product

# 2-way valves for heating and ventilation

Price EUR  
Vat 0%

## VDE... 2-WAY VALVE

Red metal, T max 120 °C, stroke 6,5 mm, PN16

Applications: Heating and ventilation

Suitable for motors: M31C150 ja M41A15



**Note.** Connections sets must be ordered separately. Do not include in the price.

CONNECTION SETS:

\*)

<b>VDE15B0.25M</b> HON295	DN 15	Kv 0.25	External thread R 1/2"	L15UK3/8"		A3	59
<b>VDE15B0.4M</b> HON296	DN 15	Kv 0.4	External thread R 1/2"	L15UK3/8"		A3	59
<b>VDE15B0.63M</b> HON297	DN 15	Kv 0.63	External thread R 1/2"	L15UK3/8"		A3	59
<b>VDE15B1.0M</b> HON298	DN 15	Kv 1.0	External thread R 1/2"	L15UK3/8"		A3	59
<b>VDE15B1.6M</b> HON299	DN 15	Kv 1.6	External thread R 1/2"	L15UK3/8"		A3	59
<b>!</b> <b>VDE15B2.5M</b> HON222	DN 15	Kv 2.5	External thread R 1/2"	L15UK3/8"		A3	59
<b>VDE20B2.5M</b> HON300	DN 20	Kv 2.5	External thread R 3/4"	L15UK-1/2", L15HI		A3	92
<b>VDE20B4.0M</b> HON301	DN 20	Kv 4.0	External thread R 3/4"	L15UK-1/2", L15HI		A3	92
<b>VDE25B6.3MP</b> HON302	DN 25	Kv 6.3	External thread R 1 1/4"	L25UK-1", L25SK-3/4", L25HI	Pressure balanced	A3	236
<b>VDE25B8.0MP</b> HON303	DN 25	Kv 8.0	External thread R 1 1/4"	L25UK-1", L25SK-3/4", L25HI	Pressure balanced	A3	236

## V5822A... 2-WAY VALVE

Brass, PN16, T max 120 °C, actuators HW 6.5 or 2.5 mm stroke



CONNECTION SETS:

\*)

<b>!</b> <b>V5822A1006</b> HON130	DN 15	Kv 0.16	external thread R1/2", stroke 6,5 mm	ACN-15C/S/T		A3	128
<b>!</b> <b>V5822A1014</b> HON131	DN 15	Kv 0.25	external thread R1/2", stroke 6,5 mm	ACN-15C/S/T		A3	128
<b>!</b> <b>V5822A1022</b> HON132	DN 15	Kv 0.40	external thread R1/2", stroke 6,5 mm	ACN-15C/S/T		A3	128
<b>!</b> <b>V5822A1030</b> HON133	DN 15	Kv 0.63	external thread R1/2", stroke 6,5 mm	ACN-15C/S/T		A3	119
<b>!</b> <b>V5822A1048</b> HON134	DN 15	Kv 1.0	external thread R1/2", stroke 6,5 mm	ACN-15C/S/T		A3	119
<b>!</b> <b>V5822A1055</b> HON135	DN 15	Kv 1.6	external thread R1/2", stroke 6,5 mm	ACN-15C/S/T		A3	119
<b>!</b> <b>V5822A1063</b> HON136	DN 20	Kv 2.5	external thread R3/4", stroke 6,5 mm	ACN-20C/S/T		A3	151
<b>!</b> <b>V5822A1071</b> HON137	DN 20	Kv 4.0	external thread R3/4", stroke 6,5 mm	ACN-20C/S/T		A3	151
<b>!</b> <b>V5822A4000</b> HON138	DN 15	Kv 1.6	external thread R1/2", stroke 2,5 mm, On/Off -control	ACN-15C/S/T		A3	97
<b>!</b> <b>V5822A4018</b> HON139	DN 20	Kv 2.5	external thread R3/4", stroke 2,5 mm, On/Off -control	ACN-20C/S/T		A3	119

**!** no stock product

\*) We reserve the right to change the prices according to Honeywell.

## 2-way valves for heating and ventilation

### V5832A... 2-WAY VALVE

Brass, PN16, T max 120 °C, stroke 6,5 mm



\*)

CONNECTION SETS:

! <b>V5832A1004</b> HON162	DN 15	Kv 0.16	external thread R1/2"	L15UK-3/8"	A3	91
! <b>V5832A1012</b> HON163	DN 15	Kv 0.25	external thread R1/2"	L15UK-3/8"	A3	91
! <b>V5832A1020</b> HON164	DN 15	Kv 0.40	external thread R1/2"	L15UK-3/8"	A3	91
! <b>V5832A1038</b> HON165	DN 15	Kv 0.63	external thread R1/2"	L15UK-3/8"	A3	91
! <b>V5832A1046</b> HON166	DN 15	Kv 1.0	external thread R1/2"	L15UK-3/8"	A3	91
! <b>V5832A1053</b> HON167	DN 15	Kv 1.6	external thread R1/2"	L15UK-3/8"	A3	91
! <b>V5832A1061</b> HON168	DN 20	Kv 2.5	external thread R3/4"	L15UK-1/2", L15HI	A3	126
! <b>V5832A1079</b> HON169	DN 20	Kv 4.0	external thread R3/4"	L15UK-1/2", L15HI	A3	126
! <b>V5832A4008</b> HON170	DN 15	Kv 1.6	external thread R1/2" On/Off -control	L15UK-3/8"	A3	77
! <b>V5832A4016</b> HON171	DN 20	Kv 2.5	external thread R3/4", On/Off -control	L15UK-1/2", L15HI	A3	103

### V5328A... 2-WAY VALVE, FLANGED

Cast iron, PN16

For heating and ventilation



\*)

! <b>V5328A1146</b> HON124	DN 15	Kv 0,4	Flanged (L=130mm)	Stroke 20 mm	Tmax 170°C	A3	814
! <b>V5328A1153</b> HON125	DN 15	Kv 0,63	Flanged (L=130mm)	Stroke 20 mm	Tmax 170°C	A3	814
! <b>V5328A1005</b> HON114	DN 15	Kv 1,0	Flanged (L=130mm)	Stroke 20 mm	Tmax 170°C	A3	740
! <b>V5328A1013</b> HON115	DN 15	Kv 1,6	Flanged (L=130mm)	Stroke 20 mm	Tmax 170°C	A3	814
! <b>V5328A1021</b> HON116	DN 15	Kv 2,5	Flanged (L=130mm)	Stroke 20 mm	Tmax 170°C	A3	740
! <b>V5328A1039</b> HON117	DN 15	Kv 4,0	Flanged (L=130mm)	Stroke 20 mm	Tmax 170°C	A3	740
! <b>V5328A1047</b> HON118	DN 20	Kv 4,0	Flanged (L=150mm)	Stroke 20 mm	Tmax 170°C	A3	837
! <b>V5328A1054</b> HON119	DN 20	Kv 6,3	Flanged (L=150mm)	Stroke 20 mm	Tmax 170°C	A3	708
! <b>V5328A1062</b> HON120	DN 25	Kv 10	Flanged (L=160mm)	Stroke 20 mm	Tmax 170°C	A3	736
! <b>V5328A1070</b> HON121	DN 32	Kv 16	Flanged (L=180mm)	Stroke 20 mm	Tmax 170°C	A3	905
! <b>V5328A1088</b> HON122	DN 40	Kv 25	Flanged (L=200mm)	Stroke 20 mm	Tmax 170°C	A3	1132
! <b>V5328A1096</b> HON271	DN 50	Kv 40	Flanged (L=230mm)	Stroke 20 mm	Tmax 170°C	A3	1321
! <b>V5328A1104</b> HON272	DN 65	Kv 63	Flanged (L=290mm)	Stroke 20 mm	Tmax 170°C	A3	1642
! <b>V5328A1112</b> HON273	DN 80	Kv 100	Flanged (L=310mm)	Stroke 20 mm	Tmax 170°C	A3	2076
! <b>V5328A1195</b> HON126	DN 100	Kv 160	Flanged (L=350mm)	Stroke 38 mm	Tmax 200°C	A3	2925
! <b>V5328A1203</b> HON127	DN 125	Kv 250	Flanged (L=400mm)	Stroke 38 mm	Tmax 200°C	A3	5373
! <b>V5328A1211</b> HON128	DN 150	Kv 360	Flanged (L=480mm)	Stroke 38 mm	Tmax 200°C	A3	5920

### VBG2... 2-WAY CONTROL BALL VALVE

Brass, PN25, T max 120 °C, Angle of rotation 90°, Suitable actuators MNV...

Valve serie available on request. See datasheet from our website.



# 2-way valves for heating and ventilation

Price EUR  
Vat 0%

## V5832B... 2-WAY VALVE

For the control of hot or chilled water for fan coil units, small reheaters/recoolers in electric/electronic temperature control systems. Can be used in combination with actuators M31C150 and M41A15.

**Note.** Connections sets must be ordered separately. Do not include in the price.



CONNECTION SETS:

<b>V5832B2075</b> HON286	DN 25	Kv 4.0	External thread R 1½", flush surface with seal	L25SK-1"	A3	392
<b>V5832B2083</b> HON287	DN 25	Kv 6.3	External thread R 1½", flush surface with seal	L25SK-1"	A3	397
<b>V5832B2091</b> HON288	DN 25	Kv 10	External thread R 1½", flush surface with seal	L25SK-1"	A3	327
<b>V5832B2109</b> HON289	DN 32	Kv 16	External thread R 2", flush surface with seal	L32SK-1 1/4"	A3	362
<b>V5832B2117</b> HON290	DN 40	Kv 25	External thread R 2¼", flush surface with seal	L40SK-1 1/2"	A3	517

\*)

## V5011R... 2-WAY VALVE

For heating, ventilation and domestic hot water. Can be used in combination with actuators ML6420... , ML6425..., ML7420... and ML7425...



\*)

<b>V5011R1000</b> HON241	DN 15	Kv 0.63	Internal thread, R 1/2"	A3	384
<b>V5011R1018</b> HON242	DN 15	Kv 1.0	Internal thread, R 1/2"	A3	384
<b>V5011R1026</b> HON243	DN 15	Kv 1,6	Internal thread, R 1/2"	A3	317
<b>V5011R1034</b> HON244	DN 15	Kv 2,5	Internal thread, R 1/2"	A3	317
<b>V5011R1042</b> HON245	DN 15	Kv 4	Internal thread, R 1/2"	A3	390
<b>V5011R1059</b> HON246	DN 20	Kv 6,3	Internal thread, R 3/4"	A3	383
<b>V5011R1067</b> HON247	DN 25	Kv 10	Internal thread, R 1"	A3	453
<b>V5011R1075</b> HON248	DN 32	Kv 16	Internal thread, R 1 1/4"	A3	502
<b>V5011R1083</b> HON249	DN 40	Kv 25	Internal thread, R 1 1/2"	A3	592
<b>V5011R1091</b> HON250	DN 50	Kv 40	Internal thread, R 2"	A3	712

## R20... 2-WAY BALL VALVES

For ventilation, heating systems and for the control of hot or chilled water for fan coil units. Can be used in combination with actuators HRYD24-SR, HRYD24-3 and HRC24-3.



\*)

<b>R2015-1-S1</b> OMB0325	DN 15	Kv 1,0	Internal thread 1/2", replace the valve R210	A2	107
<b>R2015-1P6-S1</b> OMB0324	DN 15	Kv 1,6	Internal thread 1/2", replace the valve R211	A2	107
<b>R2015-2P5-S1</b> OMB0326	DN 15	Kv 2,5	Internal thread 1/2", replace the valve R212	A2	107
<b>R2020-4-S2</b> OMB0328	DN 20	Kv 4,0	Internal thread 3/4", replace the valve R217	A2	124
<b>R2020-6P3-S2</b> OMB0329	DN 20	Kv 6,3	Internal thread 3/4", replace the valve R218	A2	124
<b>R2020-8P6-S2</b> OMB0330	DN 20	Kv 8,6	Internal thread 3/4", replace the valve R219	A2	124
<b>R2025-10-S2</b> OMB0331	DN 25	Kv 10	Internal thread 1", replace the valve R223	A2	150
<b>R2025-16-S2</b> OMB0332	DN 25	Kv 16	Internal thread 1", replace the valve R224	A2	150

! no stock product

# 3-way valves

## VXE... 3-WAY VALVE

Red metal, T max 120 °C, stroke length 6,5 mm PN 16

Applications: For heating and ventilation

Suitable for actuators: M31C150, M31A150 and M41A15

**Note.** Connections sets must be ordered separately. Do not include in the price.



CONNECTION SETS:

\*)

!	<b>VXE15B0.25M</b> HON223	DN 15	Kv 0.25	External thread R 1/2", flush surface with seal	L15UK-3/8"	A3	80
	<b>VXE15B0.4M</b> HON304	DN 15	Kv 0,4	External thread R 1/2", flush surface with seal	L15UK-3/8"	A3	106
	<b>VXE15B0.63M</b> HON305	DN 15	Kv 0,63	External thread R 1/2", flush surface with seal	L15UK-3/8"	A3	106
	<b>VXE15B1.0M</b> HON306	DN 15	Kv 1,0	External thread R 1/2", flush surface with seal	L15UK-3/8"	A3	106
	<b>VXE15B1.6M</b> HON307	DN 15	Kv 1,6	External thread R 1/2", flush surface with seal	L15UK-3/8"	A3	106
!	<b>VXE15B2.5M</b> HON224	DN 15	Kv 2.5	External thread R 1/2", flush surface with seal	L15UK-3/8"	A3	87
	<b>VXE20B2.5M</b> HON308	DN 20	Kv 2.5	External thread R 3/4", flush surface with seal	L15UK-1/2", L15HI	A3	97
	<b>VXE20B4.0M</b> HON309	DN 20	Kv 4	External thread R 3/4", flush surface with seal	L15UK-1/2", L15HI	A3	97
	<b>VXE25B6.3MP</b> HON310	DN 25	Kv 6.3	External thread R 1 1/4", flush surface with seal	L25UK-1", L25SK-3/4", L25HI	A3	260
	<b>VXE25B8.0MP</b> HON311	DN 25	Kv 8.0	External thread R 1 1/4", flush surface with seal	L25UK-1", L25SK-3/4", L25HI	A3	260

## V5833A... 3-WAY VALVE

Red metal, PN16

Applications: For heating, ventilation and domestic hot water

Suitable for motors: M31C150 and M41A15

**Note.** Connections sets must be ordered separately. Do not include in the price.



CONNECTION SETS:

\*)

!	<b>V5833A1003</b> HON172	DN 15	Kv A-AB 0.25 B-AB 0.16	External thread R1/2", Tmax 120°C, stroke 6,5 mm	L15UK-3/8"	A3	122
!	<b>V5833A1011</b> HON173	DN 15	Kv A-AB 0.4 B-AB 0.25	External thread R1/2", Tmax 120°C, stroke 6,5 mm	L15UK-3/8"	A3	122
!	<b>V5833A1029</b> HON174	DN 15	Kv A-AB 0.63 B-AB 0.4	External thread R1/2", Tmax 120°C, stroke 6,5 mm	L15UK-3/8"	A3	122
!	<b>V5833A1037</b> HON175	DN 15	Kv A-AB 1.0 B-AB 0.63	External thread R1/2", Tmax 120°C, stroke 6,5 mm	L15UK-3/8"	A3	122
!	<b>V5833A1045</b> HON176	DN 15	Kv A-AB 1.6 B-AB 1.0	External thread R1/2", Tmax 120°C, stroke 6,5 mm	L15UK-3/8"	A3	122
!	<b>V5833A4007</b> HON180	DN 15	Kv A-AB 1.6 B-AB 1.6	External thread R1/2", Tmax 120°C, stroke 2,5 mm, On/Off -control	L15UK-3/8"	A3	117
!	<b>V5833A3009</b> HON178	DN 20	Kv A-AB 2.5 B-AB 2.5	External thread R3/4", Tmax 120°C, stroke 6,5 mm	L15UK-1/2", L15HI	A3	192
!	<b>V5833A4015</b> HON181	DN 20	Kv A-AB 2.5 B-AB 2.5	External thread R3/4", Tmax 120°C, stroke 2,5 mm, On/Off -control	L15UK-1/2", L15HI	A3	117
!	<b>V5833A3017</b> HON179	DN 20	Kv A-AB 4.0 B-AB 4.0	External thread R3/4", Tmax 120°C, stroke 6,5 mm	L15UK-1/2", L15HI	A3	187
!	<b>V5833A2076</b> HON177	DN 25	Kv 4.0	External thread R1 1/2", Tmax 130°C, stroke 6,5 mm, Pressure balanced	L25SK-1", L32HI	A3	311
	<b>V5833A2084</b> HON291	DN 25	Kv 6.3	External thread R1 1/2", Tmax 130°C, stroke 6,5 mm, Pressure balanced	25SK-1", L32HI	A3	334
	<b>V5833A2092</b> HON292	DN 25	Kv 10	External thread R1 1/2", Tmax 130°C, stroke 6,5 mm, Pressure balanced	25SK-1", L32HI	A3	334
	<b>V5833A2100</b> HON293	DN 32	Kv 16	External thread R2", Tmax 130°C, stroke 6,5 mm, Pressure balanced	L32SK-1 1/4"	A3	355
	<b>V5833A2118</b> HON294	DN 40	Kv 25	External thread R2 1/4", Tmax 130°C, stroke 6,5 mm, Pressure balanced	L40UK-1 1/2", L40SK-1 1/2"	A3	473

! no stock product

\*) We reserve the right to change the prices according to Honeywell.

# 3-way valves

Price EUR  
Vat 0%

## V5013R... 3-WAY VALVE

Red metal, T max 170 °C, stroke length 20 mm, PN 16

Applications: For heating, domestic hot water and ventilation

Suitable for actuators: ML6420... , ML6425..., ML7420... and ML7425...



\*)

<b>V5013R1032</b> HON251	DN 15	Kv 2.5	Internal thread, R 1/2"	A3	297
<b>V5013R1040</b> HON252	DN 15	Kv 4	Internal thread, R 1/2"	A3	297
<b>V5013R1057</b> HON253	DN 20	Kv 6.3	Internal thread, R 3/4"	A3	327
<b>V5013R1065</b> HON254	DN 25	Kv 10	Internal thread, R 1"	A3	328
<b>V5013R1073</b> HON255	DN 32	Kv 16	Internal thread, R 1 1/4"	A3	393
<b>V5013R1081</b> HON256	DN 40	Kv 25	Internal thread, R 1 1/2"	A3	480
<b>V5013R1099</b> HON257	DN 50	Kv 40	Internal thread, R 2"	A3	604

## V5013E... 3-WAY VALVE

Red metal, PN16, T max 170 °C, stroke length 20 mm

**Note.** Connections sets must be ordered separately. Do not include in the price.

Suitable for actuators: ML6420..., ML6425..., ML7420..., ML7425...

CONNECTION SETS:

\*)

<b>V5013E1063</b> HON069	DN 15	Kv 2.5	External thread, R 1/2"	L15UK-3/8"	A3	412
<b>V5013E1071</b> HON070	DN 15	Kv 4	External thread,, R 1/2"	L15UK-3/8"	A3	412
<b>V5013E1089</b> HON071	DN 20	Kv 6.3	External thread,, R 3/4"	L15UK-1/2", L15HI	A3	437
<b>V5013E1097</b> HON072	DN 25	Kv 10	External thread,, R 1"	L20UK-3/4", L20SK-1/2", L20HI	A3	457
<b>V5013E1105</b> HON073	DN 32	Kv 16	External thread,, R 1 1/4"	L25UK-1", L25SK-3/4", L25HI	A3	543
<b>V5013E1113</b> HON074	DN 40	Kv 25	External thread,, R 1 1/2"	L25SK-1", L32HI	A3	627
<b>V5013E1121</b> HON075	DN 50	Kv 40	External thread,, R 2"	L32SK-1 1/4"	A3	810

## V5329... 3-WAY VALVE

Cast iron, T max 170 °C, stroke length 20 mm, PN 16

Applications: For heating, domestic hot water and ventilation

Suitable for actuators: ML6420... , ML6425..., ML7420... and ML7425...



\*)

<b>V5329A1004</b> HON312	DN 15	Kv 2.5	Flanged	A3	905
<b>V5329A1012</b> HON129	DN 15	Kv 4.0	Flanged	A3	905
<b>V5329A1020</b> HON313	DN 20	Kv 6.3	Flanged	A3	925
<b>V5329A1038</b> HON274	DN 25	Kv 10	Flanged	A3	944
<b>V5329A1046</b> HON275	DN 32	Kv 16	Flanged	A3	1010
<b>V5329A1053</b> HON276	DN 40	Kv 25	Flanged	A3	966
<b>V5329A1061</b> HON277	DN 50	Kv 40	Flanged	A3	1160
<b>V5329A1079</b> HON278	DN 65	Kv 63	Flanged	A3	1490
<b>V5329A1087</b> HON279	DN 80	Kv 100	Flanged	A3	2139

! no stock product

# 3-way valves

Price EUR  
Vat 0%

## V5823A... 3-WAY VALVE

Brass, PN16, T max 120 °C, HW-actuators with stroke length 6.5mm or 2.5 mm  
Applications: heating and ventilation



\*)

CONNECTION SETS:

!	<b>V5823A2003</b> HON140	DN 15	Kv 0.25	External thread, R 1/2", stroke 6,5 mm	ACN-15C/S/T	A3	161
!	<b>V5823A2011</b> HON141	DN 15	Kv 0.40	External thread, R 1/2", stroke 6,5 mm	ACN-15C/S/T	A3	161
!	<b>V5823A2029</b> HON142	DN 15	Kv 0.63	External thread, R 1/2", stroke 6,5 mm	ACN-15C/S/T	A3	161
!	<b>V5823A2037</b> HON143	DN 15	Kv 1.0	External thread, R 1/2", stroke 6,5 mm	ACN-15C/S/T	A3	141
!	<b>V5823A2045</b> HON144	DN 15	Kv 1.6	External thread, R 1/2", stroke 6,5 mm	ACN-15C/S/T	A3	141
!	<b>V5823A2052</b> HON145	DN 20	Kv 2.5	External thread, R 3/4", stroke 6,5 mm	ACN-20C/S/T	A3	185
!	<b>V5823A2060</b> HON146	DN 20	Kv 4.0	External thread, R 3/4", stroke 6,5 mm	ACN-20C/S/T	A3	185
!	<b>V5823A2151</b> HON147	DN 20	Kv 2.5	External thread, R 3/4", stroke 6,5 mm, sp 240 kPa/ -kPa	ACN-20C/S/T	A3	185
!	<b>V5823A2169</b> HON148	DN 20	Kv 4.0	External thread, R 3/4", stroke 6,5 mm, sp 240 kPa/ -kPa	ACN-20C/S/T	A3	185
!	<b>V5823A4009</b> HON149	DN 15	Kv 1.6	External thread, R 1/2", stroke 2,5 mm, On/Off -control	ACN-15C/S/T	A3	128
!	<b>V5823A4017</b> HON150	DN 20	Kv 2.5	External thread, R 3/4", stroke 2,5 mm, On/Off -control	ACN-20C/S/T	A3	128

## V5823C... 3-WAY VALVE

Brass, PN16, T max 120 °C, three-way with bypass  
HW-actuators with stroke length 6.5mm or 2.5 mm  
Applications: heating and ventilation



\*)

CONNECTION SETS:

!	<b>V5823C2009</b> HON151	DN 15	Kv A-AB 0.25 B-AB 0.16	External thread, R 1/2", stroke 6,5 mm	ACN-15C/S/T	A3	184
!	<b>V5823C2017</b> HON152	DN 15	Kv A-AB 0.4 B-AB 0.25	External thread, R 1/2", stroke 6,5 mm	ACN-15C/S/T	A3	168
!	<b>V5823C2025</b> HON153	DN 15	Kv A-AB 0.63 B-AB 0.4	External thread, R 1/2", stroke 6,5 mm	ACN-15C/S/T	A3	157
!	<b>V5823C2033</b> HON154	DN 15	Kv A-AB 1.0 B-AB 0.63	External thread, R 1/2", stroke 6,5 mm	ACN-15C/S/T	A3	155
!	<b>V5823C2041</b> HON155	DN 15	Kv A-AB 1.6 B-AB 1.0	External thread, R 1/2", stroke 6,5 mm	ACN-15C/S/T	A3	153
!	<b>V5823C2058</b> HON156	DN 20	Kv A-AB 2.5 B-AB 1.6	External thread, R 3/4", stroke 6,5 mm	ACN-20C/S/T	A3	249
!	<b>V5823C2066</b> HON157	DN 20	Kv A-AB 4.0 B-AB 2.5	External thread, R 3/4", stroke 6,5 mm	ACN-20C/S/T	A3	249
!	<b>V5823C2157</b> HON158	DN 20	Kv A-AB 2.5 B-AB 1.6	External thread, R 3/4", stroke 6,5 mm, sp 240 kPa	ACN-20C/S/T	A3	234
!	<b>V5823C2165</b> HON159	DN 20	Kv A-AB 4.0 B-AB 2.5	External thread, R 3/4", stroke 6,5 mm, sp 240 kPa	ACN-20C/S/T	A3	249
!	<b>V5823C4005</b> HON160	DN 15	Kv 1.6	External thread, R 1/2", stroke 2,5 mm	ACN-15C/S/T	A3	128
!	<b>V5823C4013</b> HON161	DN 20	Kv 2.5	External thread, R 3/4", stroke 2,5 mm	ACN-20C/S/T	A3	128

! no stock product

# 3-way valves

Price EUR  
Vat 0%

## V5050A... 3-WAY VALVE

Cast iron, PN16, Tmax 220 °C, stroke 38 mm  
Applications: heating and ventilation  
Actuators 38 mm ML6421... or ML7421...



\*)

<b>V5050A1090</b> HON111	DN 100	Kv 160	Flanged	A3	3351
<b>V5050A1108</b> HON112	DN 125	Kv 250	Flanged	A3	4755
<b>V5050A1116</b> HON113	DN 150	Kv 360	Flanged	A3	6326

## R30... 3-WAY BALL VALVE

Nickel-plated brass, T max 100 ° C, PN 16  
Applications: For heating and ventilation  
Suitable for motors: EH-800 models + SOV BELIMO, HRC24-3, HRYD24-SR, HRYD24-3



\*)

<b>R3015-P63-S1</b> OMB0340	DN 15	Kv 0.63	Internal threaded connect, thread 1/2", replace the valve R309	A2	189
<b>R3015-1-S1</b> OMB0338	DN 15	Kv 1.0	Internal threaded connect, thread 1/2", replace the valve R310	A2	189
<b>R3015-1P6-S1</b> OMB0337	DN 15	Kv 1.6	Internal threaded connect, thread 1/2", replace the valve R311	A2	189
<b>R3015-2P5-S1</b> OMB0339	DN 15	Kv 2.5	Internal threaded connect, thread 1/2", replace the valve R312	A2	210
<b>R3020-4-S2</b> OMB0341	DN 20	Kv 4.0	Internal threaded connect, thread 3/4", replace the valve R317	A2	210
<b>R3020-6P3-S2</b> OMB0342	DN 20	Kv 6.3	Internal threaded connect, thread 3/4", replace the valve R318	A2	263
<b>R3025-10-S2</b> OMB0343	DN 25	Kv 10	Internal threaded connect, thread 1", replace the valve R323	A2	373
<b>R3032-16-S3</b> OMB0344	DN 32	Kv 16	Internal threaded connect, thread 1 1/4", replace the valve R331	A2	312

## VBG3... 3-WAY CONTROL BALL VALVE

Brass, PN25, Tmax 120 °C, angle of rotation 90°C, Suitable actuators MVN...

Applications: heating and ventilation

Valve serie available on request. See datasheet from our website.

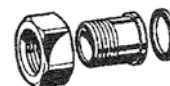


! no stock product

# Connection sets

Price EUR  
Vat 0%

## EXTERNAL THREADED CONNECTIONS



All connection sets made of zinc covering durability brass.

<b>L15UK-3/8"</b> OMB0183	DN 15	External threaded R 3/8", Internal thread to valve R 1/2"	A1	16
<b>L15UK-1/2"</b> OMB0120	DN 15	External threaded R 1/2", Internal thread to valve R 3/4"	A1	36
<b>L20UK-3/4"</b> OMB0121	DN 20	External threaded R 3/4", Internal thread to valve R 1"	A1	41
<b>L25UK-1"</b> OMB0122	DN 25	External threaded R 1", Internal thread to valve R 1 1/4"	A1	25

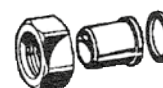
## INTERNAL THREADED CONNECTIONS



All connection sets made of zinc covering durability brass.

<b>L20SK-1/2"-1/2"</b> OMA0198	DN 20	Internal thread R 1/2", Internal thread to valve R 1"	A1	35
<b>L25SK-1"</b> OMB0185	DN 25	Internal thread R 1", Internal thread to valve R 1 1/2"	A1	30
<b>L25SK-3/4"</b> OMA0200	DN 25	Internal thread R 1", Internal thread to valve R 1 1/4"	A1	34
<b>L32SK-1 1/4"</b> OMB0187	DN 32	Internal thread R 1 1/4", Internal thread to valve R 2"	A1	52
<b>L40SK-1 1/2"</b> OMB0189	DN 40	Internal thread R 1 1/2", Internal thread to valve R 2 1/4"	A1	70

## WELDINGS



The nut made of zinc covering durability brass, the welded part made of steel.

<b>L15HI</b> OMA0196	DN 15	Welding 1/2", Internal thread to valve R 3/4"	A1	18
<b>L20HI</b> OMA0197	DN 20	Welding 3/4", Internal thread to valve R 1"	A1	19
<b>L25HI</b> OMA0199	DN 25	Welding 1", Internal thread to valve R 1 1/4"	A1	35

## STEM SEALS

<b>BOKSIT HW10MM</b> HON227	Set of stem seals for V5011/13 valves		C2	183
<b>BOKSITIIV/SIEM</b> OMB0025	Set of stem seals for Siemens 428488060: 10 mm stem		C2	80
<b>BOKSITIIV/V</b> OMB0026	Set of stem seals for V-valves OMB0026		C2	70

# Valve adapters

Price EUR  
Vat 0%

## ADAPTER FOR VD-VALVES



**JATKE EXTENSION** The VD-valve with the adapter JATKE replaces the VS-valve of Satakunnan Valu.

<b>JATKE 215/215</b> OMB0083	Pair of flange VD215 / SV 215, total length 75 mm	A1	59
<b>JATKE 220/215</b> OMB0084	Pair of flange VD220 / SV 215, total length 75 mm	A1	59
<b>JATKE 220/220</b> OMB0085	Pair of flange VD220 / SV 220, total length 100 mm	A1	75
<b>JATKE 225/220</b> OMB0086	Pair of flange VD225 / SV 220, total length 100 mm	A1	75
<b>JATKE 225/225</b> OMB0087	Pair of flange VD225 / SV 225, total length 115 mm	A1	104
<b>JATKE 232/225</b> OMB0088	Pair of flange VD232 / SV 225, total length 115 mm	A1	104



**JATKE VD EXTENSION** JATKE VD replaces the Osby 2SB valves or tai Siemens VVF valve

<b>JATKE VD15-130</b> OMB0099	Pair of flange for Osby 2SB and Siemens VVF valves, total length 130 mm	A1	99
<b>JATKE VD20-130</b> OMB0100	Pair of flange for Osby 2SB and Siemens VVF valves, total length 130 mm	A1	105
<b>JATKE VD20-140</b> OMB0101	Pair of flange for Osby 2SB valves, total length 140 mm	A1	105
<b>JATKE VD20-160</b> OMB0102	Pair of flange for Siemens VVF valves, total length 160 mm	A1	105
<b>JATKE VD25-140</b> OMB0103	Pair of flange for Osby 2SB valves, total length 140 mm	A1	101
<b>JATKE VD25-150</b> OMA0187	Pair of flange for Osby 2SB valves, total length 150 mm	A1	121
<b>JATKE VD25-160</b> OMB0104	Pair of flange for Siemens VVF valves, total length 160 mm	A1	105
<b>JATKE VD32-150</b> OMB0105	Pair of flange for Osby 2SB valves, total length 150 mm	A1	120
<b>JATKE VD32-160</b> OMB0106	Pair of flange for Siemens VVF valves, total length 160 mm	A1	120

## JATKE RV EXTENSION

<b>JATKE PARI RV 3/4"SK-1"UK</b> OMA0186	Extension 3/4" -> 1" 2 pcs + seals	A1	86
---	------------------------------------	----	----

## AK... ADAPTERS FOR VALVES

<b>AK15-15</b> OMB0003	Adapter set for VD15/Salina 15	A1	113
<b>AK20-15</b> OMB0004	Adapter set for VD20/Salina 15	A1	153
<b>AK20-25</b> OMB0005	Adapter set for VD20/Salina 25	A1	207
<b>AK25-25</b> OMB0006	Adapter set for VD25/Salina 25	A1	166

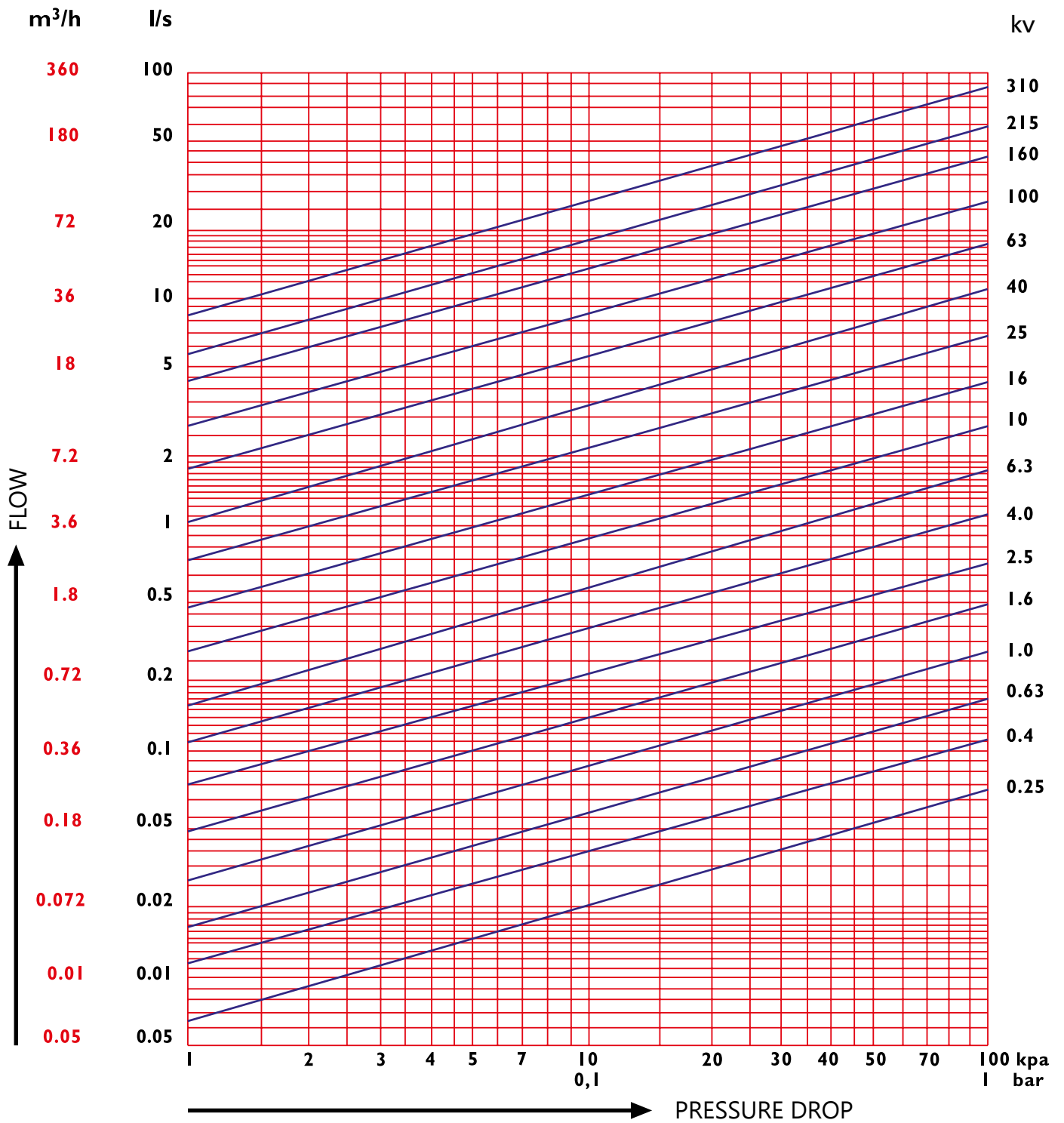
## FITTINGS

For actuators ML6420-, ML6425-, ML7420- ja ML7425, with stroke length of 20 mm

<b>SOV-L&amp;G-HON</b> OMA0268	Fittings for L&G VVG41-, VXG41- and VVF52 valves	A1	62
<b>SOV-TAC-HON</b> OMA0270	Fittings for TAC V241-, V282-, V292-, V293-, V294-, V298-, V384-, V386-, V392- and V394 valves	A1	62
<b>SW-SOV-HON</b> OMA0276	Fittings between Satchwell-Honeywell	A1	38

Note! Combinations of all variations and sizes of valves has not been tested.

# Valve dimensioning table



# Actuators for valves, 3-point control

## M31C150, M6410... VALVE ACTUATORS

Applications: For heating regulation in district heating exchangers and boiler plants, for cooling circuit regulation.

- Speed 150s/6,5mm
- Connection cable 1,5 m



\*)

<b>M31C150</b> OMA0206	Valve actuator, 3-point control, 24 V, 50 Hz, 0,7 VA, Power 300 Nm. IP43.	A3	177
<b>M6410C2023</b> HON004	Valve actuator, 3-point control, 24 V, 50 Hz, 0,7 VA, Power 180 Nm. IP43.	A3	181
<b>M6410L2023</b> HON008	Valve actuator, 3-point control, 230 V, 50 Hz, 7 VA, Power 180 Nm. IP40.	A3	260
<b>M6410C4037</b> HON007	Valve actuator, 3-point control, 24 V, 50 Hz, 0,7 VA, Power 300 Nm. IP43. + 2 micro switch	A3	336
<b>M6410L2031</b> HON009	Valve actuator, 3-point control, 230 V, 50 Hz, 7 VA, Power 300 Nm. IP40.	A3	322
<b>M6410C4029</b> HON006	Valve actuator, 3-point control, 24 V, 50 Hz, 0,7 VA, Power 180 Nm. IP43. + 2 micro switch	A3	436
<b>M6410L4029</b> HON010	Valve actuator, 3-point control, 230 V, 50 Hz, 0,7 VA, Power 180 Nm. IP43. + 2 micro switch	A3	453
<b>M6410L4037</b> HON011	Valve actuator, 3-point control, 230 V, 50 Hz, 0,7 VA, Power 300 Nm. IP43. + 2 micro switch	A3	493

## ML6420A... VALVE ACTUATORS, IP54

Applications: For heating, domestic hot water and ventilation

- Suitable for valves with 20 mm stroke length.
- Power 600 Nm
- 2 pcs micro switches ready for serial control



\*)

<b>ML6420A3007</b> HON020	Valve actuator, 3-point control, 24 V, 50 Hz, 4 VA, speed 60s/20mm.	A3	426
<b>ML6420A3023</b> HON022	Valve actuator, 3-point control, 24 V, 50 Hz, 6 VA, speed 30s/20mm.	A3	617
<b>ML6420A3015</b> HON021	Valve actuator, 3-point control, 230 V, 50 Hz, 6,5 VA, speed 60s/20mm.	A3	868
<b>ML6420A3031</b> HON023	Valve actuator, 3-point control, 230 V, 50 Hz, 6,5 VA, speed 30s/20mm.	A3	1204

## ML6421... VALVE ACTUATORS, IP54

Applications: Heating systems

- Power 1800 Nm
- 2 pcs micro switches ready for serial control



\*)

<b>ML6421A3005</b> HON024	Valve actuator, 3-point control, 24 V, 50 Hz, 13 VA, speed 114s/20mm.	A3	1363
<b>ML6421A3013</b> HON025	Valve actuator, 3-point control, 230 V, 50 Hz, 11 VA, speed 114s/20mm.	A3	1165
<b>ML6421B3004</b> HON026	Valve actuator, 3-point control, 24 V, 50 Hz, 13 VA, speed 210s/38mm.	A3	1542
<b>ML6421B3012</b> HON027	Valve actuator, 3-point control, 230 V, 50 Hz, 11 VA, speed 210s/38mm.	A3	1603

## M6422L1003 VALVE ACTUATOR, IP54

Rotary actuator for butterfly valve

- Power 40 Nm



\*)

<b>M6422L1003</b> HON012	Valve actuator, 3-point control, 230 V, 50 Hz, 7 VA, speed 150s/90°.	A3	3225
-----------------------------	--	----	------

! no stock product

\*) We reserve the right to change the prices according to Honeywell.

# Actuators for valves, 3-point control

## ML6425... VALVE ACTUATORS, IP54

Applications: For heating, domestic hot water and ventilation

- Suitable for valves with 20 mm stroke length.
- Power 600 Nm
- 2 pcs micro switches ready for serial control



\*)

!	<b>ML6425A3006</b> HON028	Valve actuator, 3-point control, 24 V, 50 Hz, 11 VA, speed 108s/20mm. 12s spring. Spring return out.	A3	1313
!	<b>ML6425A3014</b> HON029	Valve actuator, 3-point control, 230 V, 50 Hz, 12 VA, speed 108s/20mm. 12s jousi. Spring return out.	A3	1212
!	<b>ML6425B3005</b> HON030	Valve actuator, 3-point control, 24 V, 50 Hz, 11 VA, speed 108s/20mm. 12s spring. Spring return in.	A3	1895
!	<b>ML6425B3021</b> HON031	Valve actuator, 3-point control, 230 V, 50 Hz, 12 VA, speed 108s/20mm. 12s spring. Spring return in.	A3	1952

## M7410A... AND M7410C... VALVE ACTUATORS, IP43

- Suitable for valves with 2,5 mm stroke length.



\*)

!	<b>M7410A1001</b> HON013	Valve actuator, no manual use, 3-point control, 24 V, 50 Hz, 0,7 VA, Speed 60 s/2,5 mm. Power 90 Nm. Connection cable 0,8 m. Used with control ball valve (VSOx).	A3	187
!	<b>M7410C1007</b> HON014	Valve actuator, no manual use, 3-point control, 24 V, 50 Hz, 0,7 VA, Speed 2,5 min/6,5 mm. Power 180 Nm.	A3	257
!	<b>M7410C1015</b> HON015	Valve actuator, no manual use, 3-point control, 24 V, 50 Hz, 0,7 VA, Speed 2,5 min/6,5 mm. Power 300 Nm.	A3	458

## MVN... VALVE ACTUATORS, IP40

- Used with control ball valve (VBGx)
- Power 3 Nm
- Speed 108s/90°.



\*)

!	<b>MVN613A1500</b> HON038	Valve actuator, 3-point control, 24 V, 50 Hz, 1,5 VA	A3	254
!	<b>MVN663A1500</b> HON039	Valve actuator, 3-point control, 230 V, 50 Hz, 4,5 VA	A3	264

## NR-SI AND NR-HW ACTUATOR FOR RENOVATION, SIEMENS- AND HONEYWELL -VALVES

Suitable for Siemens 5,5 and Honeywell valves with 6,5 mm stroke length.

Applications: For heating, domestic hot water and ventilation



\*)

!	<b>NRD230-3-SI</b> OMB0168	Power: 500 N	Speed: 35 s	Stroke length: 5,5 mm	Consumption: 3,5 VA 230 VAC	A2	244
!	<b>NRD24-3-SI</b> OMB0169	Power: 500 N	Speed: 35 s	Stroke length: 5,5 mm	Consumption: 3 VA 24 VAC	A2	269
!	<b>NRD24-3-SI</b> OMB0165	Power: 500 N	Speed: 140 s	Stroke length: 5,5 mm	Consumption: 3 VA 24 VAC / DC	A2	239
!	<b>NRD230-3-SI</b> OMB0164	Power: 500 N	Speed: 140 s	Stroke length: 5,5 mm	Consumption: 3,5 VA 230 VAC	A2	239
!	<b>NRD230-3-HW</b> OMB0602	Power: 500 N	Speed: 35 s	Stroke length: 6,5 mm	Consumption: 2,5 VA 230 VAC	A2	244
!	<b>NRD24-3-HW</b> OMB0603	Power: 500 N	Speed: 35 s	Stroke length: 6,5 mm	Consumption: 3 VA 24 VAC	A2	269
!	<b>NRD24-3-HW</b> OMB0599	Power: 500 N	Speed: 140 s	Stroke length: 6,5 mm	Consumption: 3 VA 24 VAC / DC	A2	239
!	<b>NRD230-3-HW</b> OMB0598	Power: 500 N	Speed: 140 s	Stroke length: 6,5 mm	Consumption: 3,5 VA 230 VAC	A2	239

## HT AND HR... VALVE ACTUATORS

Suitable for R2-, R3- and R4..D(K) ball valves

Applications: For heating, domestic hot water and ventilation



\*)

!	<b>HTC24-3</b> OMB0071	Power: 5 Nm	Speed: 70 s	Consumption: 1,5 VA 24 VAC / DC	A2	236
!	<b>HTC230-3</b> OMB0074	Power: 5 Nm	Speed: 70 s	Consumption: 2,5 VA 230 VAC	A2	236
!	<b>HTD24-3</b> OMB0075	Power: 5 Nm	Speed: 140 s	Consumption: 1,5 VA 24 VAC / DC	A2	228
!	<b>HTD24-3</b> OMB0078	Power: 5 Nm	Speed: 35 s	Consumption: 1,5 VA 24 VAC / DC	A2	228

! no stock product

# 0 - 10 V controlled actuators

Price EUR  
Vat 0%

## M41A15 VALVE ACTUATOR, IP54

Suitable for valves with 6,5 mm stroke length.

Applications: For heating regulation in district heating exchangers and boiler plants, for cooling circuit regulation.



\*)

<b>M41A15</b> OMA0207	Valve actuator, 0(2)...10 VDC controlled. 24 V, 50 Hz, 5 VA. Speed 15 s/6,5 mm. Power 400 Nm.	A3	308
--------------------------	---	----	-----

## M31A150 VALVE ACTUATOR, IP42

Suitable for valves with 6,5 mm stroke length.

Applications: For heating and ventilation.



\*)

<b>M31A150</b> OMA0205	Valve actuator, 0(2)...10 VDC controlled. 24 V, 50 Hz, 1,7 VA, Speed 150s/6,5 mm. Power 300 Nm. Connection cable 1,5 m.	A3	215
---------------------------	---	----	-----

## M7410E... VALVE ACTUATORS, IP43

Applications: Heating- and ventilation systems

- Suitable for valves with 6,5 mm stroke length.
- Connection cable 1,5 m



\*)

<b>M7410E1002</b> HON016	Valve actuator, no manual use, 0(2)...10 VDC controlled. 24 V, 50 Hz, 1,7 VA. Speed 150 s/6,5 mm. Power 180 Nm.	A3	444
<b>M7410E1028</b> HON017	Valve actuator, no manual use, 0(2)...10 VDC controlled. 24 V, 50 Hz, 1,7 VA. Speed 150 s/6,5 mm. Power 300 Nm.	A3	438
<b>M7410E2026</b> HON018	Valve actuator, 0(2)...10 VDC controlled. 24 V, 50 Hz, 1,7 VA. Speed 150 s/6,5 mm. Power 180 Nm.	A3	397
<b>M7410E2034</b> HON019	Valve actuator, 0(2)...10 VDC controlled. 24 V, 50 Hz, 1,7 VA. Speed 150 s/6,5 mm. Power 300 Nm.	A3	542

## ML7420A... VALVE ACTUATORS, IP54

Suitable for valves with 20 mm stroke length.

Power 600 Nm

Applications: For heating, domestic hot water and ventilation



\*)

<b>ML7420A6009</b> HON032	Valve actuator, 0(2)...10 VDC controlled. 24 V, 50 Hz, 5 VA, speed 60s/20mm. Analog output of 2-10 VDC.	A3	644
<b>ML7420A6017</b> HON237	Valve actuator, 0(2)...10 VDC controlled. 24 V, 50 Hz, 7 VA, speed 30s/20mm. Analog output of 2-10 VDC.	A3	660

## ML7421... VALVE ACTUATORS, IP54

Applications: For heating

Power 1800 Nm



\*)

<b>ML7421A3004</b> HON034	Valve actuator, 0(2)...10 VDC controlled. , 24 V, 50 Hz, 14 VA, speed 114s/20mm. Analog output of 2-10 VDC.	A3	1021
<b>ML7421B3003</b> HON035	Valve actuator, 0(2)...10 VDC controlled. , 24 V, 50 Hz, 14 VA, speed 210s/38mm. Analog output of 2-10 VDC.	A3	1566

! no stock product

\*) We reserve the right to change the prices according to Honeywell.

# 0 - 10 V controlled actuators

Price EUR  
Vat 0%

## ML7425... VALVE ACTUATORS, IP54

Applications: Heating systems

- Suitable for valves with 20 mm stroke length.
- Power 600 Nm



\*)

<b>ML7425A6008</b> HON036	Valve actuator, 0(2)...10 VDC controlled. 24 V, 50 Hz, 12 VA, speed 108s/20mm. 12s spring. Spring return out. Analog output of 2-10 VDC.	A3	1483
<b>ML7425B6007</b> HON037	Valve actuator, 0(2)...10 VDC controlled. 24 V, 50 Hz, 12 VA, speed 108s/20mm. 12s spring. Spring return in. Analog output of 2-10 VDC.	A3	1768

## MVN... VALVE ACTUATOR, IP40

- Used with control ball valve (VBGx)



\*)

<b>MVN713A1500</b> HON040	Valve actuator, 0(2)...10 VDC controlled, 24 V, 50 Hz, 5 VA, Speed 90s/90°. Power 3 Nm.	A3	296
------------------------------	---	----	-----

## HTC24-SR VALVE ACTUATOR

Connection cable 1 m. The control voltage 0 (2) -10 V. Suitable with WNR-adaptor for R-series ball valves and with MS-NRE6-adaptor for Esben VRG and VRB valves.

Applications: For heating



\*)

<b>HTC24-SR</b> OMB0072	Power: 5 Nm	Speed: 70 s		Consumption: 3 VA 24 VAC / DC	A2	281
<b>HTD24-SR</b> OMB0076	Power: 5 Nm	Speed: 140 s		Consumption: 3 VA 24 VAC / DC	A2	281
<b>HTYD24-SR</b> OMB0079	Power: 5 Nm	Speed: 35 s		Consumption: 3 VA 24 VAC / DC	A2	304

## NR... VALVE ACTUATOR

Applications: For heating, domestic hot water and ventilation



\*)

<b>NRD24-SR-SI</b> OMB0170	Power: 500 N	Speed: 35 s	Stroke length 5,5 mm	Consumption: 3 VA 24 VAC / DC	A2	356
<b>NRD24-SR-HW</b> OMA0221	Power: 500 N	Speed: 35 s	Stroke length 6,5 mm	Consumption: 3 VA 24 VAC / DC	A2	356
<b>NRD24-SR-HW</b> OMB0601	Power: 500 N	Speed: 17 s	Stroke length 6,5 mm	Consumption: 2,5 VA 24 VAC / DC	A2	384
<b>NRD24-SR-HW</b> OMB0600	Power: 500 N	Speed: 140 s	Stroke length 6,5 mm	Consumption: 1,5 VA 24 VAC / DC	A2	330

## ADAPTERS FOR VALVE ACTUATORS

<b>MS-NRE</b> OMB0142	Adapter for the valves Esbe and Termomix	A2	17
<b>MS-NRE6</b> OMB0144	Adapter for the valves: VRG, VRB	A2	16
<b>WNR</b> OMC0180	Adapter between NR-actuator and ball valve	A2	40

! no stock product

# Damper actuators

## Honeywell damper actuators

- Suitable for all sizes of shafts
- Very easy to install and connect
- Does not require separate casing for power supply



### N05... ja N10... DAMPER ACTUATORS, IP54

- 5 Nm for 1 m<sup>2</sup> dampers
- 10 Nm for 2 m<sup>2</sup> dampers

\*)

<b>N05010</b> HON228	Damper actuator, 0(2)...10 VDC controlled, 24 VDC/ac, 50 Hz, 5 VA, speed 90/110s. Power 5 Nm. Analog output of 2-10 VDC.	A3	237
<b>N05010-SW2</b> HON041	Damper actuator, 0(2)...10 VDC controlled, 24 VDC/ac, 50 Hz, 5 VA, speed 90/110s. Power 5 Nm. Analog output of 2-10 VDC. 2 pcs micro switches ready for serial control.	A3	514
<b>N05230-2POS</b> HON042	Damper actuator, 2-point control, 230 VAC, 50 Hz, 22 VA, speed 110s. Power 5 Nm.	A3	294
<b>N0524</b> HON314	Damper actuator, 2- and 3-point control, 24 VDC/ac, 50 Hz, 5 VA, speed 110s. Power 5 Nm.	A3	328
<b>N0524-SW2</b> HON043	Damper actuator, 2- and 3-point control, 24 VDC/ac, 50 Hz, 5 VA, speed 110s. Power 5 Nm. 2 pcs micro switches ready for serial control.	A3	340
<b>N10010</b> HON315	Damper actuator, 0(2)...10 VDC controlled, 24 VDC/ac, 50 Hz, 5 VA, speed 90/110s. Power 10 Nm. Analog output of 2-10 VDC.	A3	534
<b>N10010-SW2</b> HON044	Damper actuator, 0(2)...10 VDC controlled, 24 VDC/ac, 50 Hz, 5 VA, speed 90/110s. Power 10 Nm. Analog output of 2-10 VDC. 2 pcs micro switches ready for serial control.	A3	572
<b>N10230-2POS</b> HON045	Damper actuator, 2-point control, 230 VAC, 50 Hz, 22 VA, speed 140s. Power 10 Nm.	A3	400
<b>N1024</b> HON316	Damper actuator, 2- and 3-point control, 24 VDC/ac, 50 Hz, 5 VA, speed 110s. Power 10 Nm.	A3	362
<b>N1024-SW2</b> HON046	Damper actuator, 2- and 3-point control, 24 VDC/ac, 50 Hz, 5 VA, speed 110s. Power 10 Nm. 2 pcs micro switches ready for serial control.	A3	397



### N20... DAMPER ACTUATORS, IP54

- For 4 m<sup>2</sup> dampers
- Power 20 Nm

\*)

<b>N20010</b> HON317	Damper actuator, 0(2)...10 VDC controlled, 24 VDC/ac, 50 Hz, 6 VA, speed 95/110s. Analog output of 2-10 VDC.	A3	620
<b>N20010-SW2</b> HON047	Damper actuator, 0(2)...10 VDC controlled, 24 VDC/ac, 50 Hz, 6 VA, speed 95/110s. Analog output of 2-10 VDC. 2 pcs micro switches ready for serial control.	A3	719
<b>N20230</b> HON048	Damper actuator, 2- and 3-point control, 230 VAC, 50 Hz, 8 VA, speed 110s.	A3	443
<b>N20230-SW2</b> HON049	Damper actuator, 2- and 3-point control, 230 VAC, 50 Hz, 8 VA, speed 110s. 2 pcs micro switches ready for serial control.	A3	479
<b>N2024</b> HON318	Damper actuator, 2- and 3-point control, 24 VDC/ac, 50 Hz, 6 VA, speed 110s. Voima 20 Nm.	A3	482
<b>N2024-SW2</b> HON050	Damper actuator, 2- and 3-point control, 24 VDC/ac, 50 Hz, 6 VA, speed 110s. 2 pcs micro switches ready for serial control.	A3	471



### N34... DAMPER ACTUATORS, IP54

- For 6 m<sup>2</sup> dampers
- Power 34 Nm

\*)

<b>N34010</b> HON051	Damper actuator, 0(2)...10 VDC controlled, 24 VDC/ac, 50 Hz, 6 VA, speed 95/110s. Analog output of 2-10 VDC.	A3	807
<b>N34230</b> HON052	Damper actuator, 2- and 3-point control, 230 VAC, 50 Hz, 13 VA, speed 110s.	A3	794

! no stock product

# Damper actuators

## S03 / S05... DAMPER ACTUATORS, IP54

- Spring return 25 s
- 3 Nm for 0,6 m<sup>2</sup> dampers
- 5 Nm for 1m<sup>2</sup> dampers



\*)

<b>S03010</b> HON319	Damper actuator, 0(2)...10 VDC controlled, 24 VDC/ac, 50 Hz, 7 VA, speed 90s. Power 3 Nm. Analog output of 2-10 VDC.	A3	371
<b>S0524-2POS</b> HON321	Damper actuator, 2-point control, 24 VDC/ac, 50 Hz, 8 VA, speed 45s. Power 5 Nm.	A3	509
<b>S0524-2POS-SW1</b> HON062	Damper actuator, 2-point control, 24 VDC/ac, 50 Hz, 8 VA, speed 45s. Power 5 Nm. 1 pcs adjustable micro switch.	A3	483
<b>S05010</b> HON058	Damper actuator, 0(2)...10 VDC controlled, 24 VDC/ac, 50 Hz, 8 VA, speed 90s. Power 5 Nm. Analog output of 2-10 VDC.	A3	845
<b>S05010-SW1</b> HON059	Damper actuator, 0(2)...10 VDC controlled, 24 VDC/ac, 50 Hz, 8 VA, speed 90s. Power 5 Nm. Analog output of 2-10 VDC. 1 pcs adjustable micro switch.	A3	476
<b>S05230-2POS</b> HON060	Damper actuator, 2-point control, 230 VAC, 50 Hz, 14 VA, speed 45s. Power 5 Nm.	A3	334
<b>S05230-2POS-SW1</b> HON061	Damper actuator, 2-point control, 230 VAC, 50 Hz, 14 VA, speed 45s. Power 5 Nm. 1 pcs adjustable micro switch.	A3	435

## S10... ja S20... DAMPER ACTUATORS, IP54

- Spring return 20 s
- 10 Nm for 1,5 m<sup>2</sup> dampers
- 20 Nm for 4,6 m<sup>2</sup> dampers



\*)

<b>S10010</b> HON322	Damper actuator, 0(2)...10 VDC controlled, 24 VDC/ac, 50 Hz, 14 VA, speed 90s. Power 10 Nm. Analog output of 2-10 VDC.	A3	696
<b>S10010-SW2</b> HON063	Damper actuator, 0(2)...10 VDC controlled, 24 VDC/ac, 50 Hz, 14 VA, speed 90s. Power 10 Nm. Analog output of 2-10 VDC. 2 pcs micro switches ready for serial control.	A3	530
<b>S1024-2POS</b> HON324	Damper actuator, 2-point control, 24 VDC/ac, 50 Hz, 30 VA, speed 45s. Power 10 Nm.	A3	515
<b>S1024-2POS-SW2</b> HON065	Damper actuator, 2-point control, 24 VDC/ac, 50 Hz, 30 VA, speed 45s. Power 10 Nm. 2 pcs micro switches ready for serial control.	A3	438
<b>S10230-2POS</b> HON323	Damper actuator, 2-point control, 230 VAC, 50 Hz, 45 VA, speed 45s. Power 10 Nm.	A3	572
<b>S10230-2POS-SW2</b> HON067	Damper actuator, 2-point control, 230 VAC, 50 Hz, 45 VA, speed 45s. Power 10 Nm. 2 pcs micro switches ready for serial control.	A3	646
<b>S20010</b> HON325	Damper actuator, 0(2)...10 VDC controlled, 24 VDC/ac, 50 Hz, 16VA, speed 90s. Power 20 Nm. Analog output of 2-10 VDC.	A3	974
<b>S20010-SW2</b> HON066	Damper actuator, 0(2)...10 VDC controlled, 24 VDC/ac, 50 Hz, 16VA, speed 90s. Power 20 Nm. Analog output of 2-10 VDC. 2 pcs micro switches ready for serial control.	A3	897
<b>S2024-2POS</b> HON327	Damper actuator, 2-point control, 24 VDC/ac, 50 Hz, 45 VA, speed 45s. Power 20 Nm.	A3	744
<b>S2024-2POS-SW2</b> HON068	Damper actuator, 2-point control, 24 VDC/ac, 50 Hz, 45 VA, speed 45s. Power 20 Nm. 2 pcs micro switches ready for serial control.	A3	556
<b>S20230-2POS</b> HON326	Damper actuator, 2-point control, 230 VAC, 50 Hz, 60 VA, speed 45s. Power 20 Nm.	A3	868
<b>S20230-2POS-SW2</b> HON067	Damper actuator, 2-point control, 230 VAC, 50 Hz, 60 VA, speed 45s. Power 20 Nm. 2 pcs micro switches ready for serial control.	A3	758

! no stock product

# Damper actuators

Price EUR  
Vat 0%

## SM..A DAMPER ACTUATOR, IP 54

- 20 Nm
- For 4 m2 dampers
- The drive time 150 s



\*)

!	<b>SM24A</b> OMB0385	3-point control / open-closed	Power: 20 Nm	Consumption: 4 VA 24 VAC / DC	A2	261
!	<b>SM230A</b> OMB0384	3-point control / open-closed	Power: 20 Nm	Consumption: 6 VA 230 VAC	A2	266
!	<b>SM24A-SR</b> OMB0386	2-10 V-control	Power: 20 Nm	Consumption: 4 VA 24 VAC / DC	A2	363

## NF... DAMPER ACTUATOR

- 10 Nm
- For 2 m2 dampers
- The drive time 75 s, NF24A-SR 150 s
- Spring return 20 s



\*)

	<b>NF24A</b> OMB0155	Open-closed control	Power: 10 Nm	Consumption: 5,5 VA 24 VAC / DC	A2	366
	<b>NF24A-SR</b> OMB0156	Control 2...10 V	Power: 10 Nm	Consumption: 5,5 VA 24 VAC / DC	A2	432

## SF... DAMPER ACTUATOR, IP 54

- 20 Nm
- For 4 m2 dampers
- The drive time 75 s, SF24A-SR 150 s
- Spring return 20 s



\*)

	<b>SF24A</b> OMB0377	Open-closed	Power: 20 Nm	Consumption: 7,5 VA 24 VAC / DC	A2	447
	<b>SFA</b> OMB0376	Open-closed	Power: 20 Nm	Consumption: 18 VA 24-240 VAC / 24-125 VDC	A2	514
	<b>SF24A-SR</b> OMB0378	2-10 V-control	Power: 20 Nm	Consumption: 7 VA 24 VAC / DC	A2	513

! no stock product

\*) We reserve the right to change the prices according to Belimo

# Other field devices

Price EUR  
Vat 0%

## C01A THERMOSTAT



<b>C01A</b> OMA0043	Thermostat, surface mounting 20...90 °C, differential range 7 °C	A2	100
------------------------	--	----	-----

## JVA24 FROST PROTECTION THERMOSTAT

JVA 24 is security component, which monitors and adjusts AHU's water radiator return temperature if needed. It is designed to prevent freezing of water radiator. Suitable sensors Ouman TMI Pt 1000 and Ni 1000.



<b>JVA24</b> OMB0107	Anticipating frost protection thermostat	A2	213
-------------------------	--	----	-----

## EHC VOLTAGE DIVIDER

- Operating voltage 24 VAC
- Input 0-10 VDC
- Output 0-10 V / 10-0 V



<b>EHC</b> OMA0148	Voltage divider	A1	94
-----------------------	-----------------	----	----

## EHR VOLTAGE-CONTROLLED RELAY, IP 55

- Operating voltage 24 VAC
- Input 0 - 10 V
- 2 pcs output, exchange contact 8 (1) A / 230 VAC



<b>EHR</b> OMA0154	Voltage-controlled relay	A1	122
-----------------------	--------------------------	----	-----

## TI DUCT THERMOMETER Ø 100 MM

- Length 200 mm
- Temperature range -40 °C ... +60 °C



<b>TI</b> OMB0399	Duct thermometer	A2	23
----------------------	------------------	----	----

# Other field devices

Price EUR  
Vat 0%

## ETT6 INDULGE BUTTON

- 1...6 hours extra running time for the device by pressing the button.



\*)

<b>ETT6</b> OMB0516	Indulge button	A2	121
------------------------	----------------	----	-----

## PWR POWER UNITS

- Four different outputs power source.



<b>PWR 10</b> OMB0489	Power unit 24 VAC / 10 VA, width 35,5 mm (2M)	C2	23
<b>PWR 24</b> OMB0488	Power unit 24 VAC / 24 VA, width 54 mm (3M)	C2	28
<b>PWR 40</b> OMB0486	Power unit 24 VAC / 40 VA, width 54 mm (3M)	C2	38
<b>PWR 63</b> OMB0487	Power unit 24 VAC / 63 VA, width 106 mm (6M)	C2	57
<b>PWR 30W/24VDC</b> OMB0606	Power unit 30W / 24VDC, width 35 mm (2M)	C2	17

## VAK-POWER UNITS



<b>PWR130</b> OMB0425	Protective voltage transformer with thermal prot. 230VAC / 24 VAC, 130 VA. DIN-rail mounting W90,L84,H110	C2	47
<b>PWR180</b> OMB0426	Protective voltage transformer with thermal prot. 230VAC / 24 VAC, 180 VA. W105,L89,H115	C2	58
<b>PWR250</b> OMB0427	Protective voltage transformer with thermal prot. 230VAC / 24 VAC, 250 VA. W130, L115, H119	C2	79

# Ouman Oy - General Terms of Delivery and Warranty

## SCOPE OF APPLICATION

These Terms of Delivery shall apply to any retail of components and equipment between Ouman Oy and the customer, unless other agreements are signed (excluding deliveries involving customised products or deliveries that involve a significant amount of installation).

## PRICING

Pricing is based on Ouman Oy's pricelist valid on the day the order is placed. All prices are indicated without value added tax. The taxes are calculated according to the prevailing legislation. In the event that any changes take place in payments related to customs, freight, VAT or other general payments before the date of delivery, the seller shall have the right to adjust the pricing of the articles in the same proportion as the changed pricing or payments have impacted the price of the articles.

## OFFER

The price indicated in the offer is a net price for a given unit (excluding VAT) for the indicated quantity located in the seller's warehouse. Any offer provided by the seller is binding and valid for 30 days, unless otherwise indicated. If the seller's offer is subject to goods still remaining unsold at the time of buyer's order, the goods can be sold to a third party during the period of the offer and the seller does not guarantee that there is stock.

## AGREEMENT

An agreement is formed between the seller and the buyer once the parties to the agreement have signed a written agreement (Procurement Agreement); the buyer has, in writing or verbally, agreed a binding agreement (order), or the seller has, in writing or verbally, confirmed an order, which is not based on an offer or differs from an offer, per se (order confirmation).

## DIAGRAMS AND DESCRIPTIONS

Any price, measurement, weight and performance-related information indicated in descriptions, figures, diagrams, lists and pricelists are provided without guarantees, unless the offer specifically refers to such information. Any drawings and technical documents required for the manufacturing of the goods or their components, delivered, prior to or after entering into an agreement, from one party to another party to an agreement, shall remain in the possession of the supplier. The recipient shall not have the right to use, duplicate, deliver or otherwise provide any related information to a third party.

## TERMS OF DELIVERY

The terms of delivery is FCA (Incoterms 2020), unless other agreements are signed.

## EXPORT CONTROL

The Buyer undertakes to comply with all applicable sanctions including but not limited to sanctions issued by the European Union, United Nations and United States and United Kingdom, as well as any other applicable sanctions legislation. These include, but are not limited to, restrictions against countries which are subject to sanctions, certain individuals or entities, the end-use of the products as well as dual-use products, military equipment, technology, software and services.

## EXPORT RESTRICTIONS

Some products supplied by Ouman are subject to export restrictions. The Buyer will not export, re-export or otherwise transfer Seller's products, whether installed into another product or not, to Russia, Belarus, Iran, North Korea, Syria or nongovernmental controlled areas of Ukraine. In addition, the Buyer warrants it is not subject to sanctions laws imposed by the European Union, United Nations, United States and the United Kingdom or owned or controlled by an entity or person subject to Sanctions Laws. Upon request, the Buyer is obligated to provide the end-use location of the supplied products.

If the Buyer acts in breach of this clause or otherwise fails to comply with the Sanctions Laws, Ouman is entitled to immediately withdraw from the contract or to freeze deliveries (entirely or from the part that has not yet been fulfilled), without the Buyer having the right to raise any claim of whatsoever nature against Ouman. In these cases, the Buyer is also liable for any damage and loss caused to or sustained by Ouman.

## PACKAGE

Any prices indicated in the pricelists and catalogues refer to unpacked goods.

## DELIVERY TIME

The seller shall deliver the goods as agreed. In the event that no delivery time is agreed upon, the seller shall deliver the ordered products immediately, or as soon as stock is available. In the event that the seller has receivables due from the buyer, the seller, after informing the buyer, shall have the right to delay agreed deliveries until due payments are remitted. In such event it is considered that the agreed delivery time is delayed accordingly, and the buyer shall not have the right to make claims related to such delay. The goods are considered to be delivered once they are dispatched or reported as ready for delivery and the buyer is contractually obligated to retrieve the goods from the seller or from a location indicated by the seller.

## **DELAY NOTIFICATIONS**

The buyer and the seller must immediately inform one another in the event that a delivery or reception of delivery may be delayed. Once either party receives notification of a delay, they must immediately inform the other party, stating the reason for the delay and the estimated new delivery date.

## **DELIVERY AND INSPECTION OF GOODS**

Liability for risk is transferred to the buyer upon delivery of the goods. The goods must be equipped with a delivery note. Upon receiving the delivery, the buyer must confirm that the delivery is in accordance with the order and the delivery note and free of external damages. The goods must be appropriately inspected by the buyer once more before commissioning, mounting or installation. Any reclamation related to quantities or type of goods shall be done in writing within 8 business days of receipt of goods. Failure to do so will void the buyer's right to claims related to deficiencies or inadequacies.

## **FORCE MAJEURE**

The seller is not obligated to fulfil their contractual obligations in the event of a force majeure, or if the fulfilment of the contractual obligations would require sacrifices that are disproportionate in terms of the resulting benefit to the buyer. In the event that the force majeure ceases within a reasonable timeframe, the buyer shall have the right to demand the seller to meet their contractual obligations. In the event that the manufacturer or supplier, who the seller has procured the goods from, neglects their contractual obligations, resulting in a delay in a delivery by the seller, the seller shall not be liable for damages incurred by the buyer in such event. If the seller is affected by a force majeure described herein, the buyer shall not have the right to demand a new delivery to replace defective goods. In the event that the fulfilment of contractual obligations within a reasonable timetable is impossible due to a force majeure, both parties to the agreement shall have the right, without incurred liability, to terminate the agreement by notifying the other party in writing.

## **PAYMENT**

Payment term begins from the date of the invoice. In the event that a payment is delayed, the buyer shall be liable to pay interest on overdue payments according to the current interest rates applied by the seller, as well as any costs resulting from the recovery of overdue payments.

## **WARRANTY**

The seller provides a 24-month warranty for the quality of the materials and workmanship of all delivered goods. The warranty period begins on the date of purchase. In the event that material or workmanship defects are detected and the goods are sent, without delay or no later than by the end of the warranty period, back to the seller, the seller agrees to address the defect at their own discretion either by repairing the damaged goods or by delivering a new, defect-free goods, free of charge, to the buyer. The buyer is responsible for the costs resulting from delivering the goods to the seller for warranty repairs, while the seller is responsible for the costs resulting from returning the goods to the buyer. The warranty shall not cover damages resulting from accidents, lightning, floods or other natural events, normal wear and tear, inappropriate, negligent or unusual use of the goods, overloading, incorrect maintenance, or reconstruction, alteration and installation work which is not carried out by the seller (or their authorised representative). The buyer shall be responsible for selecting material of equipment susceptible to corrosion, unless other agreements are signed. In the event that the seller alters the structure of their equipment, they shall not be obligated to make similar changes to previously procured equipment. The validity of the warranty requires that the buyer has fulfilled their contractual obligations related to the delivery. The seller shall provide a new warranty for goods replaced or repaired under the original warranty. However, the new warranty shall only be valid until the expiration of the warranty period of the original goods. For any repairs not covered by the warranty shall be subject to a 3-month maintenance warranty covering the material and workmanship.

## **INDIRECT DAMAGES**

The seller shall not be liable for any indirect damages incurred by the buyer as a result of delays or inadequacies related to the delivery. Furthermore, the seller shall not be liable for indirect damages resulting from a defective product in the event that the defect is caused by damages indicated in the warranty section as not covered by the warranty. Subject to the terms of the product liability insurance, the seller's insurance company shall reimburse any indirect material damages or physical injuries resulting from a defective product, provided that the defect could not be discovered at the factory under normal testing conditions.

## **RETURNS**

The transaction is binding and irreversible, and the seller shall not be obligated to accept any product returns. In the event, however, that the seller has explicitly agreed to a return, any goods delivered under this agreement shall be received and reimbursed up to 70% of the retail price. Such goods can only be received and reimbursed in the event that they are returned in the original packing and condition.

## **NOTIFICATIONS**

The sender is responsible for ensuring that notifications sent to the other party are delivered.

## **OWNERSHIP**

The ownership of the goods is transferred to the buyer upon remittance of the entire purchase price.

## **DISAGREEMENTS**

Any disagreements resulting from the agreements and their terms should be primarily resolved through bilateral negotiations. In the event that the disagreement cannot be resolved, the disagreement shall be resolved through arbitration in Finland according to current legislation. The arbitration court consists of one (1) member.



### The factory and sales office



Linnunrata 14, 90440 KEMPELE

### Southern Finland sales office



Itsehallintokuja 6, 02600 ESPOO

### General web addresses

<https://oumanshop.com>

<https://ouman.fi>

[sales@ouman.fi](mailto:sales@ouman.fi)

### Export

#### KARI HEIKKILÄ

Export Manager  
Building Automation  
Tel. +358 40 840 2312  
[kari.heikkila@ouman.fi](mailto:kari.heikkila@ouman.fi)



#### ALEKSANDER LIIN

Area Sales Manager - Baltics  
Building Automation  
Tel. +372 5349 4605  
[aleksander.liin@ouman.ee](mailto:aleksander.liin@ouman.ee)



We reserve the right to make changes and corrections in prices, products, and specifications without notice.