

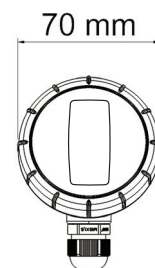
Type code	Temp. meas. element	Meas. accuracy temperature	brightness
TMO-LUX / NTC10	NTC 10	± 0,2 °C (0-70 °C)	± 40 % @ 10 lx, 33 % @ 20 lx
TMO-LUX / Pt1000	Pt 1000	± 1 °C (0-70 °C)	± 40 % @ 10 lx, 33 % @ 20 lx
TMO-LUX / Ni1000	Ni 1000 LG	± 1 °C (0-70 °C)	± 40 % @ 10 lx, 33 % @ 20 lx



Technical information:

Materials	Cover PC, base PBT, seal PA
Protection class	IP 54
Seal	M16 x 1,5
Range of use	- 50 °C...+ 50 °C / 0 - 800 lx
Time constant	10 min
Cable	4 x 0,8 mm ²

Dimensions:

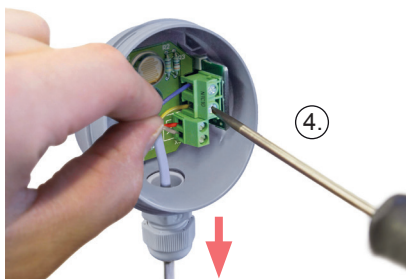


Installation and connection

Position the TMO-LUX sensor preferably in a shady place on the northern side. Install the outdoor sensor at a high of about 2.5 meters.

! Do not install the sensor directly above a window, door, vent or sensor cable protection tube coming from indoors (warm air rises and gives a wrong reading). The sensor must not be installed next to an exhaust duct or any other source of heat.

1. Screw open the cover of the sensor case.
2. The plug can be attached to the wall
3. Screw a screw through the membrane seal to puncture it. Screw the sensor to the wall. Make sure that the cable's bushing seal on the case goes down.
4. Connect the sensor to the regulating device as a four-wire connection using weak current cable.
5. Tighten the bushing seal so that it acts as a seal and repels water.



NTC10

Tol. $\pm 0,2$ °C (0-70 °C)

Temperature/Resistance

°C	Ω
-50	672 600
-40	337 270
-30	177 210
-25	130 540
-20	97 140
-15	72 990
-10	55 350
-5	42 340
0	32 660
5	25 400
10	19 900
15	15 710
20	12 490
25	10 000
30	8 055
35	6 531
40	5 325
45	4 368
50	3 602

Ni 1000 LG

Tol. $\pm 0,4$ °C (0 °C)
DIN EN43760
tcr 5000 ppm / K

Temperature/Resistance

°C	Ω
-50	790,9
-40	830,8
-30	871,7
-25	892,5
-20	913,5
-15	934,7
-10	956,2
-5	978,0
0	1000,0
5	1022,3
10	1044,8
15	1067,6
20	1090,7
25	1114,0
30	1137,6
35	1161,5
40	1185,7
45	1210,2
50	1235,0

Pt 1000

Tol. $\pm 0,3$ °C (0 °C)
DIN EN60751 B
tcr 3850 ppm / K

Temperature/Resistance

°C	Ω
-50	803,1
-40	842,7
-30	882,2
-25	901,9
-20	921,6
-15	941,2
-10	960,9
-5	980,4
0	1000,0
5	1019,5
10	1039,0
15	1058,5
20	1077,9
25	1097,3
30	1116,7
35	1136,1
40	1155,4
45	1174,7
50	1194,0

Brightness/Resistance

LDR

Tol. ± 40 % @ 10 lx,
 ± 33 % @ 20 lx

lx	0	20	30	40	50	60	70	80	90	100	
kOhm	44,7	15,6	14,3	13,1	12	10,9	9,9	9,1	8,4	7,8	
lx	150	200	250	300	350	400	450	500	600	700	800
kOhm	5,9	4,6	3,8	3,4	3,1	2,9	2,7	2,6	2,3	2,1	1,9

